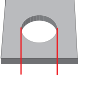
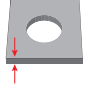
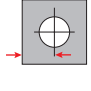



Malzeme / Material : Isıl İşlem Görmüş Karbon Çelik Çinko Kaplama / Heat-Treated Carbon Steel Zinc Plated

Ölçülendirme / Dimensions									Kuvvet / Forces	Ürün / Product
Çap Diameter	Shaft Kodu Shank Code				D Max.	B +.00 - .20	H ±.10	A Max.	Önerilen Somun Sıkma Torku Recommended Nut Tightening Torque Nm	
M3 x 0.5	1	4.50	1.0	4.5	4.45	5.5	2.0	1.0	11.7	04.CKN00.M03001
	2		1.4					1.4	12.7	04.CKN00.M03002

* Tüm ölçüler mm cinsindedir. / All dimensions are in mm

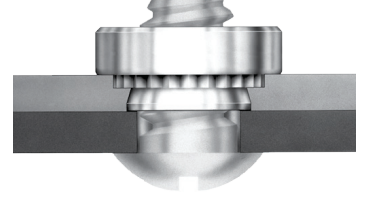
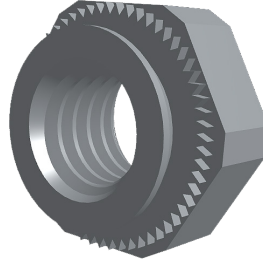
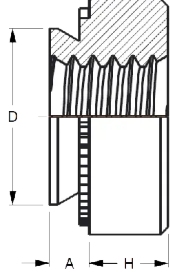
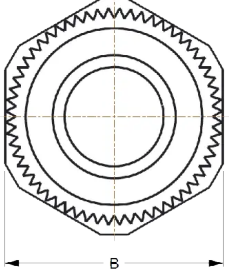
* Tüm boy ölçülerinde [+0,1/-0,5] mm tolerans değeri olasıdır. / A tolerance value of [+0,1/-0,5] mm is possible for all length dimensions

* 1,5 mm veya daha az malzeme kalınlığı için öerste bir havşa deliği gereklidir. / For material thickness of 1.5mm or less, a countersunk hole is needed in the anvil.

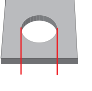
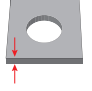
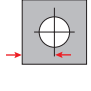

* 1,5 mm veya daha fazla malzeme kalınlığı için öerste bir geçiş deliği gereklidir. / For material thickness of 1.5mm or more, a trough-hole is needed in the anvil

* Uygulama videosu için QR kodu okutun. / Scan the QR code for the application video.





Malzeme / Material : Isıl İşlem Görmüş Karbon Çelik Çinko Kaplama / Heat-Treated Carbon Steel Zinc Plated

Ölçülendirme / Dimensions									Kuvvet / Forces	Ürün / Product
Çap Diameter	Shaft Kodu Shank Code				D Max.	B +.00 -.20	H ±.10	A Max.	Önerilen Somun Sıkma Torku Recommended Nut Tightening Torque Nm	
M4 x 0.7	1	5.5	1.0	5.5	5.45	7.0	2.2	1.0	12.7	04.CKN00.M04001
	2		1.4					1.4	13.7	04.CKN00.M04002

* Tüm ölçüler mm cinsindedir. / All dimensions are in mm

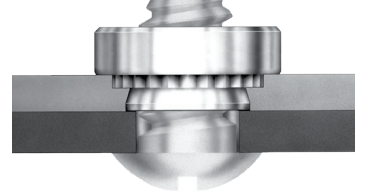
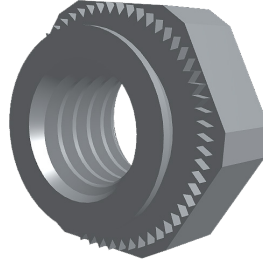
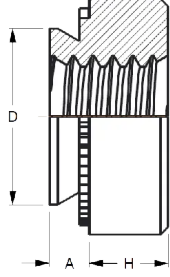
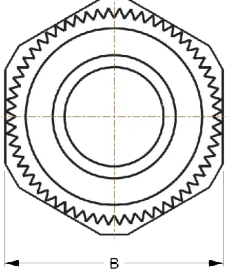
* Tüm boy ölçülerinde [+0,1/-0,5] mm tolerans değeri olasıdır. / A tolerance value of [+0,1/-0,5] mm is possible for all length dimensions

* 1,5 mm veya daha az malzeme kalınlığı için öerste bir havşa deliği gereklidir. / For material thickness of 1.5mm or less, a countersunk hole is needed in the anvil.

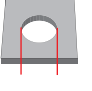
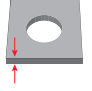
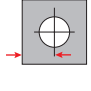

* 1,5 mm veya daha fazla malzeme kalınlığı için öerste bir geçiş deliği gereklidir. / For material thickness of 1.5mm or more, a trough-hole is needed in the anvil

* Uygulama videosu için QR kodu okutun. / Scan the QR code for the application video.





Malzeme / Material : Isıl İşlem Görmüş Karbon Çelik Çinko Kaplama / Heat-Treated Carbon Steel Zinc Plated

Ölçülendirme / Dimensions									Kuvvet / Forces	Ürün / Product
Çap Diameter	Shaft Kodu Shank Code				D Max.	B +.00 - .20	H ±.10	A Max.	Önerilen Somun Sıkma Torku Recommended Nut Tightening Torque Nm	
M5 x 0.8	1	6.5	1.0	6.5	6.45	8.0	3.0	1.0	13.7	04.CKN00.M05001
	2		1.4					1.4	14.7	04.CKN00.M05002

* Tüm ölçüler mm cinsindedir. / All dimensions are in mm

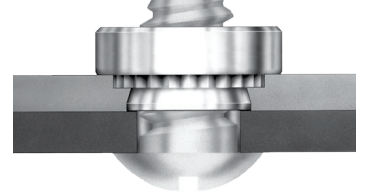
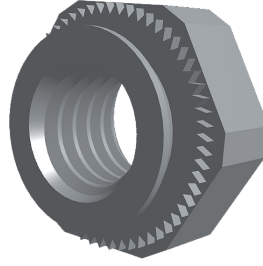
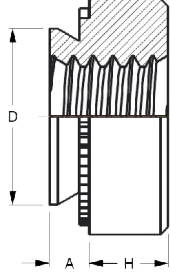
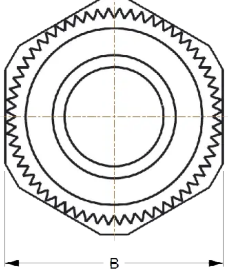
* Tüm boy ölçülerinde [+0,1/-0,5] mm tolerans değeri olasıdır. / A tolerance value of [+0,1/-0,5] mm is possible for all length dimensions

* 1,5 mm veya daha az malzeme kalınlığı için öerste bir havşa deliği gereklidir. / For material thickness of 1.5mm or less, a countersunk hole is needed in the anvil.

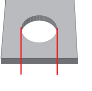
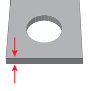
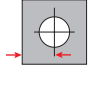

* 1,5 mm veya daha fazla malzeme kalınlığı için öerste bir geçiş deliği gereklidir. / For material thickness of 1.5mm or more, a trough-hole is needed in the anvil

* Uygulama videosu için QR kodu okutun. / Scan the QR code for the application video.





Malzeme / Material : Isıl İşlem Görmüş Karbon Çelik Çinko Kaplama / Heat-Treated Carbon Steel Zinc Plated

Ölçülendirme / Dimensions									Kuvvet / Forces	Ürün / Product
Çap Diameter	Shaft Kodu Shank Code				D Max.	B +.00 - .20	H ±.10	A Max.	Önerilen Somun Sıkma Torku Recommended Nut Tightening Torque Nm	
M6 x 1.0	1	8.0	1.0	8.0	7.95	10.0	4.0	1.0	16.6	04.CKN00.M06001
	2		1.4					1.4	19.6	04.CKN00.M06002

* Tüm ölçüler mm cinsindedir. / All dimensions are in mm

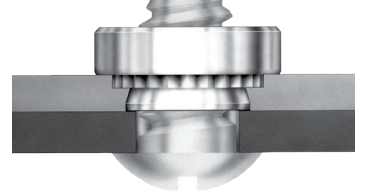
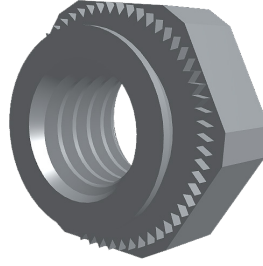
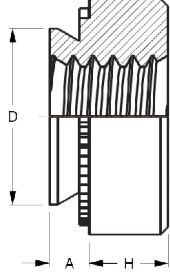
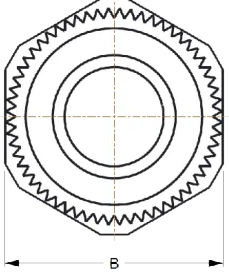
* Tüm boy ölçülerinde [+0,1/-0,5] mm tolerans değeri olasıdır. / A tolerance value of [+0,1/-0,5] mm is possible for all length dimensions

* 1,5 mm veya daha az malzeme kalınlığı için öerste bir havşa deliği gereklidir. / For material thickness of 1.5mm or less, a countersunk hole is needed in the anvil.

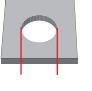
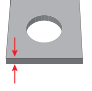
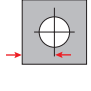

* 1,5 mm veya daha fazla malzeme kalınlığı için öerste bir geçiş deliği gereklidir. / For material thickness of 1.5mm or more, a trough-hole is needed in the anvil

* Uygulama videosu için QR kodu okutun. / Scan the QR code for the application video.





Malzeme / Material : Isıl İşlem Görmüş Karbon Çelik Çinko Kaplama / Heat-Treated Carbon Steel Zinc Plated

Ölçülendirme / Dimensions									Kuvvet / Forces	Ürün / Product
Çap Diameter	Shaft Kodu Shank Code				D Max.	B +.00 - .20	H ±.10	A Max.	Önerilen Somun Sıkma Torku Recommended Nut Tightening Torque Nm	
M8 x 1.25	2	10.0	1.4	10.0	9.95	13.0	4.5	1.4	24.5	04.CKN00.M08002
	3		2.0					29.4	04.CKN00.M08003	

* Tüm ölçüler mm cinsindedir. / All dimensions are in mm

* Tüm boy ölçülerinde [+0,1/-0,5] mm tolerans değeri olasıdır. / A tolerance value of [+0,1/-0,5] mm is possible for all length dimensions

* 1,5 mm veya daha az malzeme kalınlığı için öerste bir havşa deliği gereklidir. / For material thickness of 1.5mm or less, a countersunk hole is needed in the anvil.

* 1,5 mm veya daha fazla malzeme kalınlığı için öerste bir geçiş deliği gereklidir. / For material thickness of 1.5mm or more, a trough-hole is needed in the anvil

* Uygulama videosu için QR kodu okutun. / Scan the QR code for the application video.

