



EM Electronic Keeper

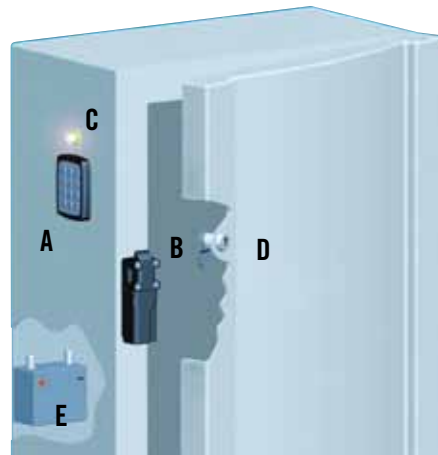
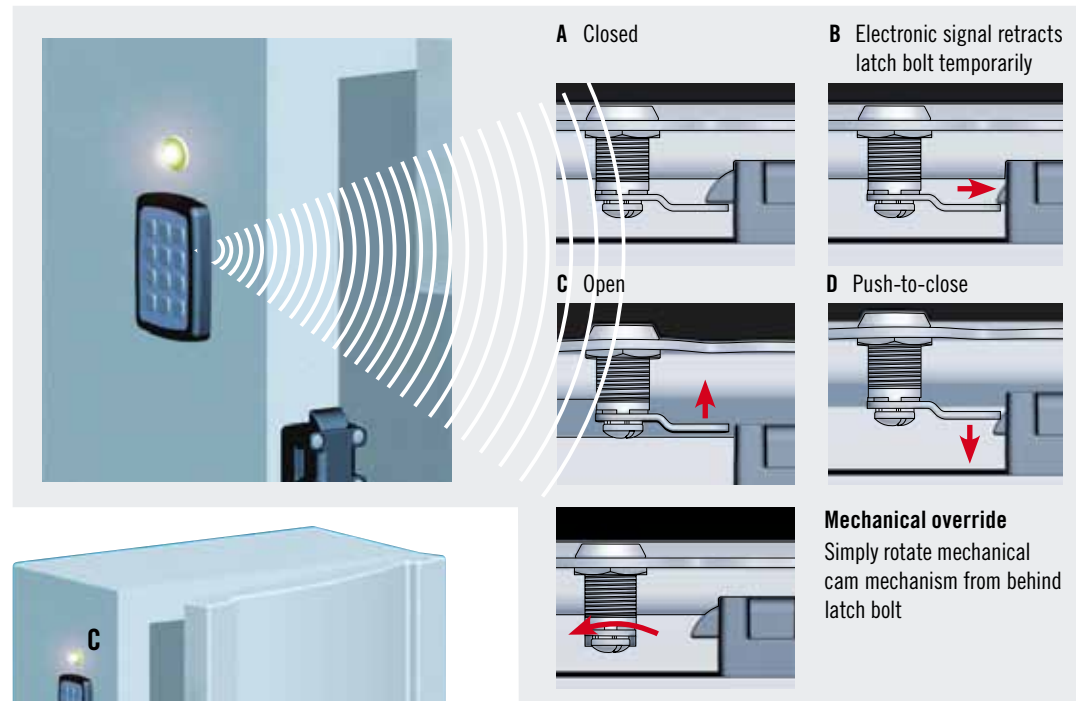
Electronic strike

Upgrade any manual latching system to electronic access by replacing the fixed keeper component with the electronically controlled Electronic Keeper. The versatile Electronic Keeper fits a variety of applications with multiple mounting configurations and simple installation and operation.

- 12 and 24 Volt available
- Simple transition from mechanical to electronic access
- "Push-to-close" convenience for any application – retrofit or new installation
- Accepts signals from any electronic actuation source
- Frame-side mounting simplifies wiring
- Single or multi-point latching
- Permits remote monitoring, audit trails and alarming
- Works with a variety of door mounted mechanical latches

Every Electronic Keeper installation works on these same basic principles:

Electronic Actuation



A. Electronic access control device

- Electronic access controller generates standard 12-24 V output signal upon receipt of valid credentials

B. Electronic Keeper electromechanical latch

C. Optional position feedback signal

D. Mechanical latch

- Key-locking latch can be unlocked to provide controlled access as a manual override

E. Power supply

Installation Options



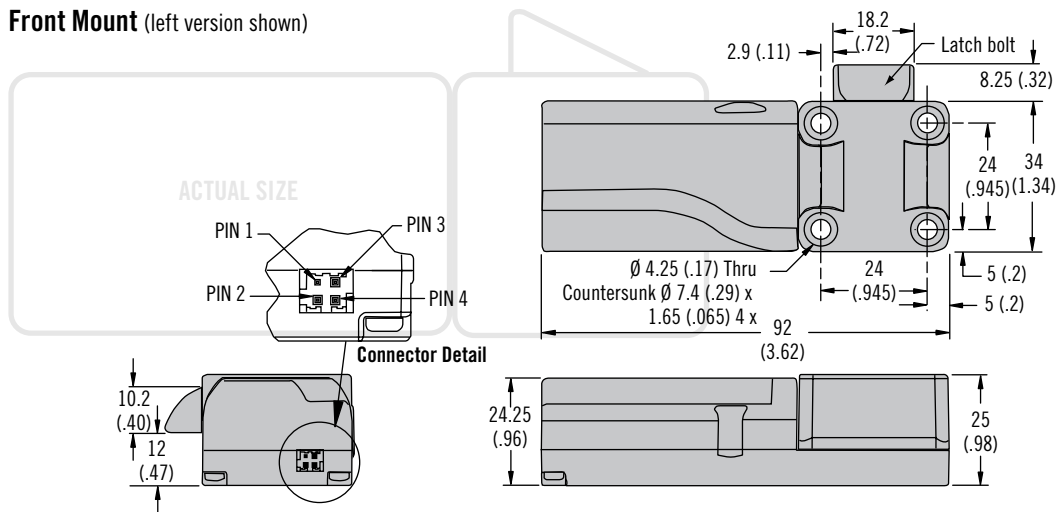
1 Center orientation

2 Left or right orientation

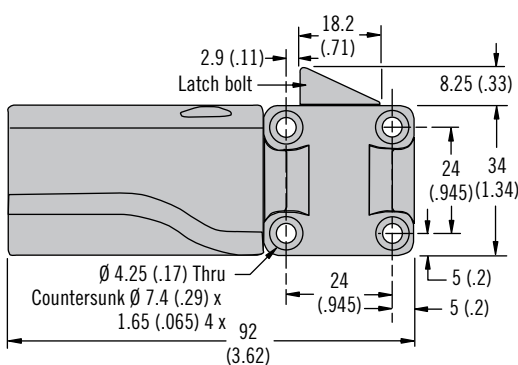
3 Side mount (left version shown)



Front Mount (left version shown)



Side Mount (left version shown)



Wire harness and connector



Part Number	
Wire Harness with Mate Connector (order separately)	Length
EM-10-40	300 (11.81)
EM-10-41	1000 (39.37)
EM-10-42	2000 (78.74)

VDC	PART NUMBERS	Front Mount Version
12VDC 24VDC	EM-10-13-310 EM-10-13-410	Left
12VDC 24VDC	EM-10-11-310 EM-10-11-410	Center
12VDC 24VDC	EM-10-12-310 EM-10-12-410	Right

Rotation Kit

Part Number	
Rotation Kit * (order separately)	EM-10-32-85



VDC	PART NUMBERS	Side Mount Version
12VDC 24VDC	EM-10-23-310 EM-10-23-410	Left
12VDC 24VDC	EM-10-21-310 EM-10-21-410	Center
12VDC 24VDC	EM-10-32-310 EM-10-32-410	Right

Material & Finish

Enclosure & latch bolt:
Thermoplastic
Housing assembly screws:
Steel, zinc plated

Electrical Specifications

Recommended operating voltage:
12-24 Volt DC
Other voltages available,
contact Southco for details.
No load operating current:
200 mA @ 12-24 V
Peak stall / current: 1 A

Control Input

Retracted Position: 12-24 Volt DC
The latch bolt will remain retracted
for as long as the signal is present
or a minimum of 1 second.
Input Signal Current: 25 mA
Extended Position: 0 VDC

Output Signal

Output Signal Rating:
450 mA Max. load
Output will turn on when latch bolt
is in retracted position. Output slow
flashes On/Off when latch error
occurs.
No signal at latch bolt extended
position.

Connector

PIN 1: Control input signal
PIN 2: Power (+)
PIN 3: Output signal
PIN 4: Ground (-)
Mate connector not included, order
separately.

The Electronic Keeper is provided
with a specific latch bolt orientation
(Left, Right or Center). Latch bolt
direction can be re-oriented using
the appropriate replacement gear
from the *optional rotation kit.

Part Number

See table

EM-03-23-340	EM-10-21-310-1
EM-03-23-440	EM-10-21-410
EM-03-31-24	EM-10-22-0
EM-03-43-340	EM-10-22-310
EM-03-43-440	EM-10-22-310-1
EM-0-44536	EM-10-22-410
EM-0-44591	EM-10-23-0
EM-05-11-001	EM-10-23-310
EM-05-11-001-1	EM-10-23-310-1
EM-05-11-100	EM-10-23-410
EM-05-11-100-1	EM-10-30
EM-05-11-101	EM-10-31-310
EM-05-11-101-1	EM-10-31-410
EM-05-11-110	EM-10-32-310
EM-05-11-110-1	EM-10-32-410
EM-05-11-111	EM-10-32-85
EM-05-11-111-1	EM-10-33
EM-05-21-001	EM-10-33-310
EM-05-21-100	EM-10-33-410
EM-05-21-101	EM-10-40
EM-05-21-110	EM-10-41
EM-05-21-111	EM-10-41-410
EM-05-42-2401	EM-10-42
EM-05-42-2401-1	EM-10-42-410
EM-05-52-2001	EM-10-43
EM-05-52-2001-1	EM-10-43-410
EM-05-52-2002	EM-99-124
EM-05-52-2002-1	EM-99-170
EM-05-53-2001	
EM-05-53-2001-1	
EM-05-53-2002	
EM-05-53-2002-1	
EM-05-54-2001	
EM-05-54-2002	
EM-05-55-2001	
EM-05-55-2002	
EM-0-58124	
EM-10-11-0	
EM-10-11-310	
EM-10-11-310-1	
EM-10-11-410	
EM-10-12-0	
EM-10-12-310	
EM-10-12-310-1	
EM-10-12-410	
EM-10-13-0	
EM-10-13-310	
EM-10-13-310-1	
EM-10-13-410	
EM-10-14	
EM-10-21-0	
EM-10-21-210	
EM-10-21-310	