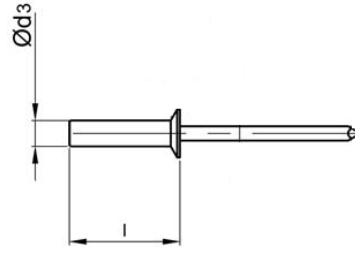
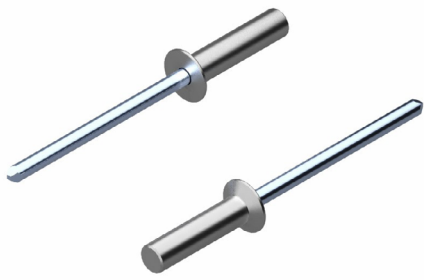
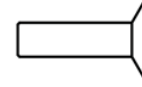


# SIZDIRMAZ PERÇİN AL/ST HAVŞA KAFA

## SEALED RIVET AL/ST COUNTERSUNK HEAD



Alüminyum [AlMg3,5]  
Parlatılmış


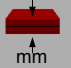


Aluminium [AlMg3,5]  
Polished

Çelik  
Fosfatlanmış



Steel  
Phosphated

Ø d3			l [+1/-2] [mm]		ÜRÜN NO PART NO		
3,2 [+0,08]	Ø 3,3	$\begin{matrix} \updownarrow \\ \rightleftharpoons \end{matrix}$ [N] : 1.245	7,0	1,5 - 3,5	01.031221.32070		
			9,0	3,0 - 5,0	01.031221.32090*		
			10,5	4,5 - 6,5	01.031221.32105*		
4,0 [+0,08]	Ø 4,1	$\begin{matrix} \updownarrow \\ \rightleftharpoons \end{matrix}$ [N] : 2.240	9,5	2,5 - 4,5	01.031221.40095		
			11,0	4,5 - 6,5	01.031221.40110*		
			12,5	6,5 - 8,0	01.031221.40125		
4,8 [+0,08]	Ø 4,9	$\begin{matrix} \updownarrow \\ \rightleftharpoons \end{matrix}$ [N] : 3.070	9,5	2,5 - 4,5	01.031221.48095		
			11,0	4,0 - 6,0	01.031221.48110*		
			12,5	5,5 - 7,5	01.031221.48125		
			14,0	7,0 - 9,0	01.031221.40140		
			16,0	9,5 - 11,0	01.031221.48155		
		$\begin{matrix} \updownarrow \\ \rightleftharpoons \end{matrix}$ [N] : 2.230	19,0	12,0 - 14,0	01.031221.48190		

