
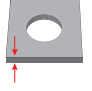
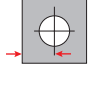



**Malzeme / Material : 300 Serisi Paslanmaz Çelik / 300 Series Stainless Steel**

Ölçülendirme / Dimensions										Kuvvet / Forces	Ürün / Product
Çap Diameter	Shaft Kodu Shank Code	 +0.08	 Min.	 Min.	A Max.	B +0.00 -0.20	C Max.	D Max.	E Max.	Önerilen Somun Sıkma Torku Recommended Nut Tightening Torque Nm	 04.FE000
M3 x 0.5	1	4.39	0.99	3.6	3.96	4.37	4.88	1.02	1.90	1.23	04.FE000.M03001
	2		1.50					1.53			04.FE000.M03002

\* Tüm ölçüler mm cinsindedir. / All dimensions are in mm

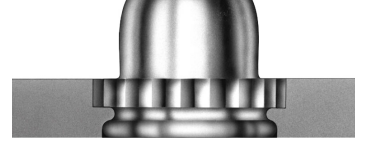
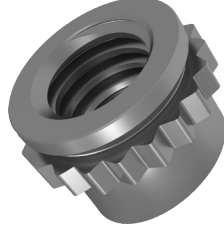
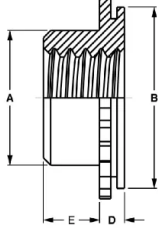
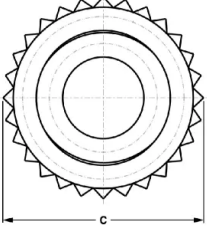
\* Tüm boy ölçülerinde [+0,1/-0,5] mm tolerans değeri olasıdır. / A tolerance value of [+0,1/-0,5] mm is possible for all length dimensions

\* 1,5 mm veya daha az malzeme kalınlığı için öerste bir havşa deliği gereklidir. / For material thickness of 1.5mm or less, a countersunk hole is needed in the anvil.


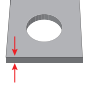
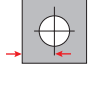

\* 1,5 mm veya daha fazla malzeme kalınlığı için öerste bir geçiş deliği gereklidir. / For material thickness of 1.5mm or more, a trough-hole is needed in the anvil

\* Uygulama videosu için QR kodu okutun. / Scan the QR code for the application video.





**Malzeme / Material :** 300 Serisi Paslanmaz Çelik / 300 Series Stainless Steel

Ölçülendirme / Dimensions										Kuvvet / Forces	Ürün / Product
Çap Diameter	Shaft Kodu Shank Code	 +0.08	 Min.	 Min.	A Max.	B +0.00 -0.20	C Max.	D Max.	E Max.	Önerilen Somun Sıkma Torku Recommended Nut Tightening Torque Nm	 04.FE000
M4 x 0.7	1	7.39	0.99	5.2	5.23	7.37	8.17	1.02	2.55	2.82	04.FE000.M04001
	2		1.50					1.53			04.FE000.M04002

\* Tüm ölçüler mm cinsindedir. / All dimensions are in mm

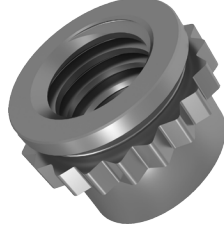
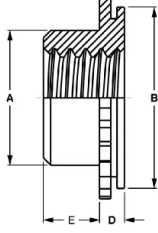
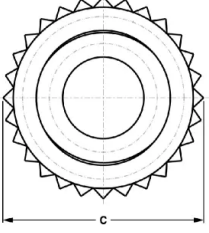
\* Tüm boy ölçülerinde [+0,1/-0,5] mm tolerans değeri olasıdır. / A tolerance value of [+0,1/-0,5] mm is possible for all length dimensions

\* 1,5 mm veya daha az malzeme kalınlığı için öerste bir havşa deliği gereklidir. / For material thickness of 1.5mm or less, a countersunk hole is needed in the anvil.

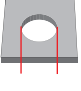
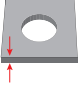
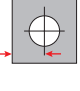

\* 1,5 mm veya daha fazla malzeme kalınlığı için öerste bir geçiş deliği gereklidir. / For material thickness of 1.5mm or more, a trough-hole is needed in the anvil

\* Uygulama videosu için QR kodu okutun. / Scan the QR code for the application video.





**Malzeme / Material :** 300 Serisi Paslanmaz Çelik / 300 Series Stainless Steel

Ölçülendirme / Dimensions										Kuvvet / Forces	Ürün / Product
Çap Diameter	Shaft Kodu Shank Code	 +0.08	 Min.	 Min.	A Max.	B +0.00 -0.20	C Max.	D Max.	E Max.	Önerilen Somun Sıkma Torku Recommended Nut Tightening Torque Nm	 04.FE000
M5 x 0.8	1	7.39	0.99	5.2	6.48	7.37	8.17	1.02	3.05	3.52	04.FE000.M05001
	2		1.50					1.53			04.FE000.M05002

\* Tüm ölçüler mm cinsindedir. / All dimensions are in mm

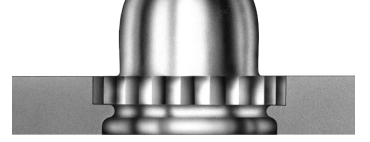
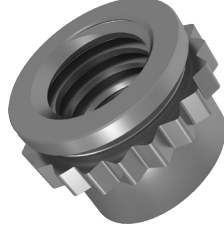
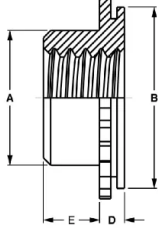
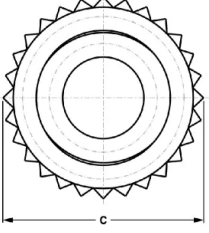
\* Tüm boy ölçülerinde [+0,1/-0,5] mm tolerans değeri olasıdır. / A tolerance value of [+0,1/-0,5] mm is possible for all length dimensions

\* 1,5 mm veya daha az malzeme kalınlığı için öerste bir havşa deliği gereklidir. / For material thickness of 1.5mm or less, a countersunk hole is needed in the anvil.


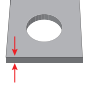
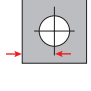

\* 1,5 mm veya daha fazla malzeme kalınlığı için öerste bir geçiş deliği gereklidir. / For material thickness of 1.5mm or more, a trough-hole is needed in the anvil

\* Uygulama videosu için QR kodu okutun. / Scan the QR code for the application video.





**Malzeme / Material : 300 Serisi Paslanmaz Çelik / 300 Series Stainless Steel**

Ölçülendirme / Dimensions										Kuvvet / Forces	Ürün / Product
Çap Diameter	Shaft Kodu Shank Code				A Max.	B +0.00 -0.20	C Max.	D Max.	E Max.	Önerilen Somun Sıkma Torku Recommended Nut Tightening Torque Nm	
M6 x 1.0	1	8.74	1.50	7.1	7.72	8.72	9.74	1.53	3.30	4.90	04.FE000.M06001 04.FE000.M06002

\* Tüm ölçüler mm cinsindedir. / All dimensions are in mm

\* Tüm boy ölçülerinde [+0,1/-0,5] mm tolerans değeri olasıdır. / A tolerance value of [+0,1/-0,5] mm is possible for all length dimensions

\* 1,5 mm veya daha az malzeme kalınlığı için örste bir havşa deliği gereklidir. / For material thickness of 1.5mm or less, a countersunk hole is needed in the anvil.

\* 1,5 mm veya daha fazla malzeme kalınlığı için örste bir geçiş deliği gereklidir. / For material thickness of 1.5mm or more, a trough-hole is needed in the anvil

\* Uygulama videosu için QR kodu okutun. / Scan the QR code for the application video.

