



C2 Access Indicator

- Provide visual signal that latch has been actuated
- Separate key to reset red indicator to green
- Sealed to NEMA4 / IP65



C2 Push to Lock

- New industrial design with modern appearance
- Push to lock functionality ensures security
- Integrated bumper reduces vibration



Coming Soon
(Zinc Version)

E3 Visual Indicator (MIM)

- Red wings provide a visual indication
- Enhances safety, minimizes maintenance errors
- Stainless steel construction
- NEMA 4 and IP66/IP67 rated



Feb
2024

E3 Hygienic Series

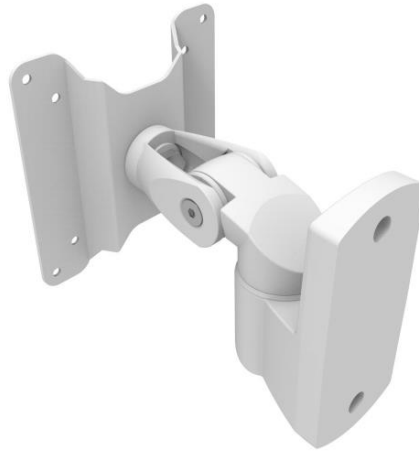
- Provides exceptional sealing and cleanability
- Targeted at food and medical industries
- Endures intensive and forceful chemical cleaning
- IP69K and DIN1672-2 compliant

E3 B-Stable Cover Series

- Designed to provide enhanced security and protection from dust and moisture
- Pairs with sealing cover with bi-stable hinge
- When latch is unsecure, cover pops open to provide visual indication of latch status

E9 Quarter Turn Compression

- All new optimized design offers an economical upgrade from cam to a compression latch
- Easy, drop-in replacement for an existing Cam Latch
- Simple single quarter-turn motion
- Sealing, Vibration resistant & restricted access options



AH-2E Articulating Hinge

- Multiple Sizes, materials and finishes
- 20mm (Alu), 12mm (SS)
- 180° range of motion

AV-B30 Adjustable Monitor Mount

- Entry-level monitor mount
- All joints can be adjusted using supplied tools

ST-20L Low Profile Torque Hinge

- Low Profile design fits into tight spaces
- Press-in and threaded adapter options



EH-xB Plastic Heavy Duty Free-Swinging Hinge

- 40mm, 50mm, 65mm, 100mm
- Stainless Steel pin so suitable for outdoor use
- Mix and match mount options: Counterbore, Countersunk, Threadnut, Threadstud



EH-8C Alu Free-Swinging Hinge

- Thin Frame leaf for HVAC-type enclosures
- Longer strap leaf for large doors
- Slotted option for mounting adjustability



E6-70/71 Stainless Steel Constant Torque Hinge

- Same torque / footprint as popular E6-10-400 series
- Available with passivated or polished finish options
- Countersunk or Counterbore options
- Surface & Flush Mount Options



ST-7A2 and ST-10A2 “next gen” Constant Torque Hinges

- Improved Cycle Life to **50k** cycles
- High strength adapters
- Wire offset adapter options
- Footprint options to match Southco panel prep and competitive mounting, also suits metric hardware.
- Expected availability Q4 2023



E6-50-300 Small Plastic Constant Torque Hinge

- Same panel prep as adjustable E6-10-300 series
- Upgrade from adjustable torque to constant torque
- Black through hole version Q4-23
- White and studded versions expected availability from Q1-24



EH-7A Cast Zinc Free Swinging Hinge

- Large footprint hinge for larger doors
- Extends our line of free-swinging surface mount hinges
- Studded and through-hole options
- Expected availability Q4 2023



Tooling
Q1-2025



Tooling
Q2-2025

EC Damped / Soft-Close Hinge

- Same footprint & industrial design as E6-10-600 series
- Can be combined with E6 to create hold-open soft-close functionality
- Provides soft-close functionality to industrial lids

T6 Stamped Stainless Steel Friction Hinges

- Same footprint as N6 Stainless Free-Swinging Hinges
- Scalable platform of products
- Estimated availability Q1 2024



Product Features and Benefits

- Designed for 2U server applications
- Hand operated, secure fastening
- Spring ejected stud for ease of use
- Wide selection of receptacle options

Options

- Three different standard TMT options
- Blue or Black cap as standard
(other colours available on request)
- Optional compression gasket (washer) also available

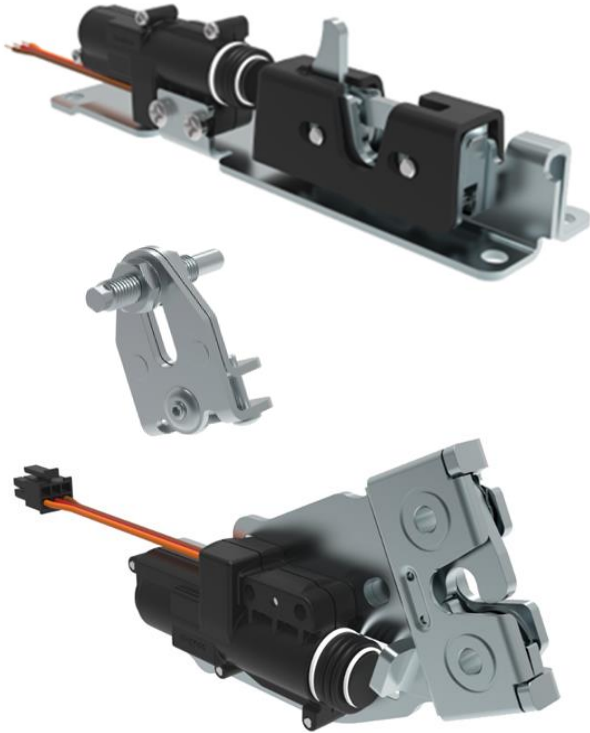


Product Features and Benefits

- New modular design for configuration at installation
- Line extension of existing H3-EM-6 series
 - Has the same function and operation
 - Fits the standard 150 x 25mm panel prep
 - Works with existing range of rod, gearboxes and accessories

Options

- 6 different key codes as standard
- 3 versions of RFID Card reader modules as standard
- Other options available on request



Product Features and Benefits

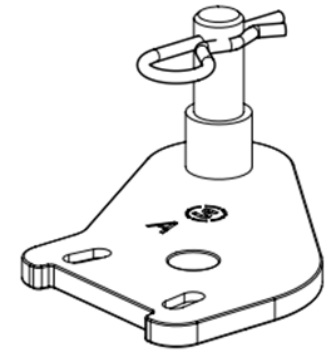
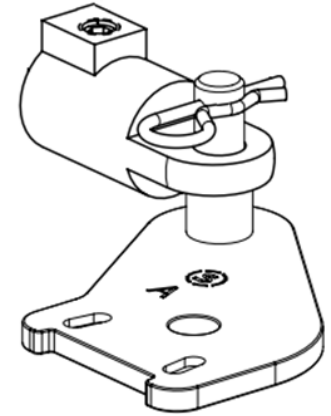
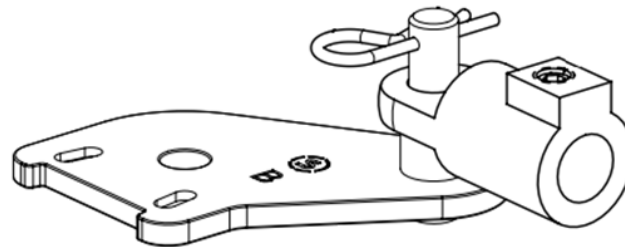
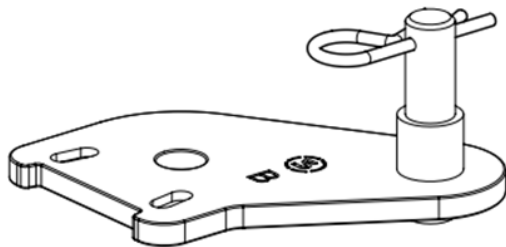
- 2 different versions to suit:
 - Hex rod systems
 - Round and Flat rod systems
- 2 different mounting styles:
 - Mechanically mounted (screws/studs)
 - VHB adhesive patch (retrofit applications)
- Stainless steel parts and sealed actuator

Options

- 6 pin connector or stripped/tinned wires
- 5V or 12V
- 'Kick Out' version for specialist applications

Product Features and Benefits

- Compatible with all fixed grip E5s
- Available with or without rod the adaptor
- A and B versions for left and right hinged doors or CW/CCW rotating handles
- Pressure release versions also available (for specific applications) on request





New Gasket GA-010-82-M500

- Taller top bulb that fills larger gaps between doors and panels
- Supports more compression forces from larger doors
- Non-Vented and Vented options

New Vented Gasket Option

- For applications where the gasket is sealed and the build-up of pressure increases the closing efforts to an unacceptable level
- Available for most gasket profiles



B8 Sliding Window latch

- Press button to release
- Simple surface mount

P1 Metal Flush Pull

- Durable and stylish design for heavy doors and panels
- Simple, single mount hole installation

P9 Crate Handle

- Low profile style folds compact when not in use
- Convenient user access to enclosures in limited-space and heavy-duty environments

Handles

Recent Releases – Ike Teng

SHAPING
OUR FUTURE
GSM 2023



B8 Grab Handle

- § Similar to existing B8 plastic handle with much lower cost
- § Handle width ranging from 92 to 150 mm
- § Rear and front install available
- § Variety of Industries served

B8 Angular Handle

- § Plastic material with ergonomic grab with 100 mm & 140 mm width
- § Black powder coated zinc with 195 mm width
- § Angular handle to provide easy entry access while climbing the vehicle

§ P8 Large Size Wire Pull Handle & Pipe Handle

- § Large size P8 aluminum handle (black & silver)
- § Handle width ranging from 250 to 600 mm
- § Focused on Industry Machinery Market



Handle Series:

- Internal capabilities to drive cost effective handles for market
- Easily configurable lengths and color matching capability to suit customer requirements.
- Formed Handles with secondary tapping



Coming
Soon

4D Captive Screw

- Next generation design of the 4C
- Updated Knob design eliminates 4C tilt issues
- Allows leverage of 47 stamped ferrule for press-in & flare-in versions.



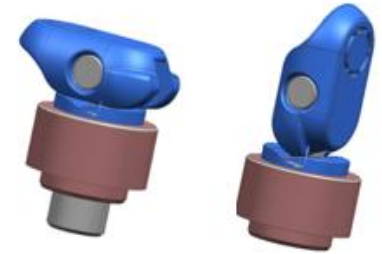
9.5 mm



15 mm



25 mm



E1.S Ejector Series

- Intuitive operation with press button & ergonomic inject/eject lever
- Over travel design of insertion guarantees SSD board fully engages with connector
- Fiber optics light guide provides greater flexibility of light distribution
- Color button to customer request
- Three sizes available (9.5, 15 & 25mm)

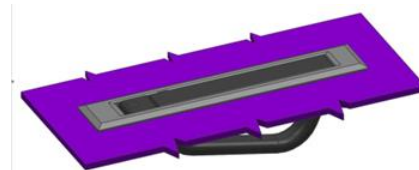
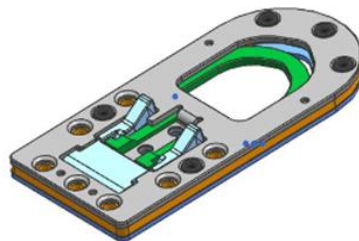
- EMI gasket flexibility

M.2 Latch

- Intuitive operation with push to close and press button to release function
- Tool-less installation with rotate to locked and unlocked position
- Easy customization to customer's color requests
- Automated with in-line inspections

56 Mini Plunger

- Lever Operation: Quick one step hand operation for latching and unlatching
- Hold-open feature: Lever holds plunger in retracted position in the open position
- Press-in, Flare-in SMT for a variety of installation methods



E3 Ejector Series (E3 Form Factor)

- Intuitive operation with press button & ergonomic inject/eject lever
- Over travel design of insertion guarantees SSD board fully engages with connector
- Fiber optics light guide provides greater flexibility of light distribution
- Color button to customer request
- Two sizes available (1T & 2T)
- EMI gasket flexibility

RA Rack Attach

- Intuitive operation with “pull up to unlatch” and “slide down to latch”
 - § Convenient installation with 5 M3 screws attached to chassis
 - § High strength design for 100 Kg load
 - § Ultra thin module of 5.5 mm thickness
- Identical design for Left & Right

67 Concealed Handle

- Intuitive operation with push to lock function
- Flush mounting
- Black & silver colour versions available
- Heavy duty (800 N max. working load)



M5-7 Magnetic Catches

- Marine-grade corrosion resistant stainless steel & high gloss finish
- Configurable to meet a range of holding powers & variety of panel sizes
- Anti-vibration & High tolerance for misalignment
- How to order a set guide on [Southco.com](https://www.southco.com)

M1 Hybrid 2" Line Extension

- Plastic housings with stainless steel handles
- Project status: Finalizing locking handle tooling
- Expected availability: 4Q-2023

MP-07 Snap-in Point Coat Hook Line Extension

- Simplifies installation for a range of panel thicknesses
- Eliminates mounting nut & lock washer
- Project status: PV Testing
- Expected availability 4Q-23



TM Door Latch – Rotating Handle

- Easy Operation with push button and turn handle actuation
- Rotates in either direction
- Medium & Heavy-Duty Options
- Stainless Steel for high corrosion resistance (Marine Grade)



E5-7



E5-7A



E5-6A



E5-9A



E5-9
Wing Knob



E5-9
Low Profile



E5-M
Key & Tool



E5-M
Mini Wing



E5-7 L-Handle & E5-7A Extended Housing, Padlockable

- Door/Panels up to 2" thick
- Integral padlock hasp
- Key and Tool Access Restriction
- Nema 4 / IP65

E5-6A Tool Access & E5-9A Extended Housing, L-Handle

- Door/Panels up to 2" thick
- E5-6A: Tool Driver Options
- E5-9A: Hand Op, Key & Tool Access
- NEMA 4 / IP65

E5-M Mini Wing

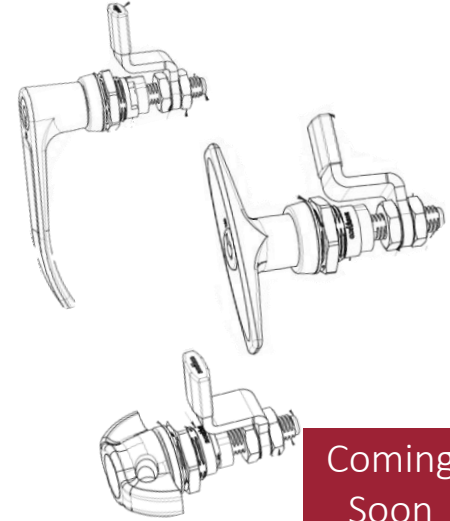
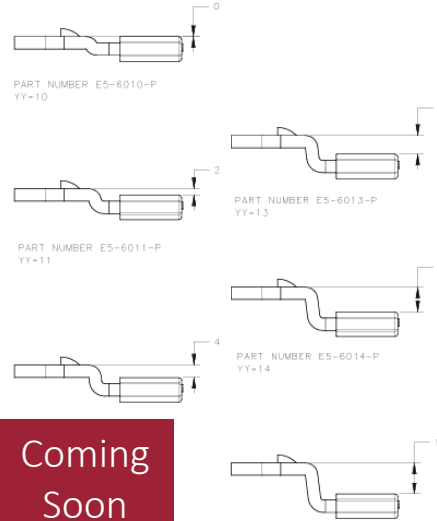
- Compact for tight envelopes
- Key & Tool Access Options

E5-9 Wing Knob & Low Profile

- Heavy Duty Lockplug (sealed)
- Low profile Series

Cam Latches

Recent Releases – Ike Teng



E5 Roller Cam Accessory

- Reduced operating effort
- Minimize scratching frame finish
- Detented feel with optional keeper

E5 Flush Cup Accessory

- Two Cup depth options
- Two hole options for both E3 & E5's
- Threadstud and Thru-hole mounting options

E5 Protected Cam, Fixed Grip

- Minimize scratching frame finish
- Fixed Grip increments
- Full range of grips

E5 Adjustable Grip, Hand Actuation Series

- Full E5-9 hand-actuated offering
- Benefits of adjustable grip

Push-to-Close Rotary Brochure

southco®



Rotary Latching
Systems

Overview Rotary Latching Systems

Multiple actuation options:



Custom cable lengths

Push-to-close
convenience

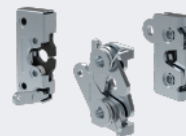
Variety of size options:



southco

Total System Overview Rotary Latching Systems

Southco's Rotary Latch Systems have three distinct components: Rotary Latch, Cable and Actuator. Southco uses these three components to enable remote or manual actuation to suit a variety of applications.



1 Rotary Latch

Holds the panel secure and provides the strength for the system

- Electronic and mechanical access options
- Rugged steel construction to meet high strength needs
- Stainless steel versions offer maximum corrosion resistance
- Heavy-duty styles comply with FMVSS standards
- Two-stage engagement for added protection against false latching

2 Rotary Latch Actuators

The touch point that determines the level of system security

- Key lock, electronic and pneumatic release
- Single point and multi-point actuation
- Multiple actuation styles including push button, pull handle and squeeze to open
- Cable splitter available for added actuation points and timed release



3 Rotary Latch Cables & Mounting Hardware

Connects the latch to the actuator for remote release

- Enable remote operation and flexible actuator placement
- Mounting hardware to support installation flexibility



southco



R4-82 Rotary All-in-one solution

- R4-10 rotary latch attached to a heavy-duty actuator
- Direct actuation, no cable or rod required
- Single or two stage latching with vibration dampening bumper

R4-30 Heavy-Duty Rotary Latch

- Integrated Bumper for noise and vibration resistance
- Integrated cable mounting bracket for bottom trigger solutions

AC-10-EM & AC-11-EM Actuator

- Electronic lock/unlock – keyless access
- Single, multi-point and direct pull actuation capability
- Integrated cable bracket simplifies cable selection and mounting



R4-05 Line Extensions:

- Steel & Black Zinc Finish
 - Significant corrosion resistance
- R4-05 Direct Actuation Lever
 - Steel material
- R4-05 Mounting Bracket
 - Steel material

R4-75 Rotary Latch, Protected Striker, Cable Clip

- Medium-duty rotary with two stage latching
- Mechanism concealed behind the panel protects from dirt & debris
- Steel, zinc plate

R4-EM-05 Compact Electromechanical Rotary Latch

- Intelligent Gear Motor Driven Solution
- Auto and Delayed Relock Operation
- Includes Latch Sensor (Trigger) and Optional Door Sensor



AC-20 Non-locking

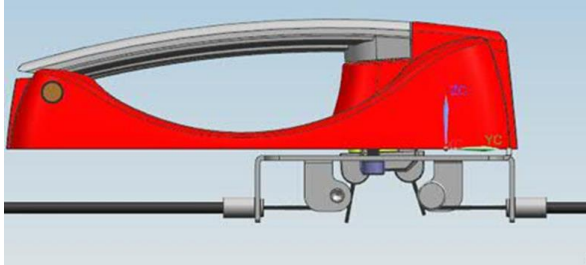
- Line extension for applications without the need for key locking

R4-50 Single Stage

- Line extension for non-FMVSS 206 applications

Wire Form Strikers

- Sized for R4-05, R4-10 & R4-25 rotary latches
- Steel, zinc plate and zinc nickel (Black) offerings available now
- Stainless steel expected 1Q 2024
- More sizes to follow...



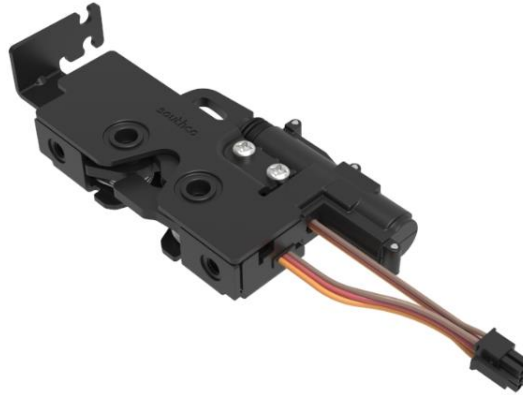
AC-15 Dual Cable Pull Accessory Kit

- Supports remote and multi-point latching
- Bolt on accessory to meet a range of panel thicknesses
- Galvanized steel cable bracket and die cast double barrel bracket
- Launched September 2023



AC-50 Squeeze Handle Actuator with Dual Cable Pull

- For multi-point latching systems
- Aluminum die cast levers - superb strength for high release loads
- Integrated symmetric cable mounting brackets
- Accommodates low profile threaded inserts on mounting tube
- Launched October 2024



R4-25 Medium-Duty Rotary Latch

- Symmetrical design, bottom trigger with cable bracket
- Front and side mount solutions
- Micro-switch offers latch / door status feedback
- Pawl kick out spring released August 2023
- Steel with zinc or zinc nickel plating
- Detent spring (pull-to-open) released July 2024 for electronic access options
- More line extensions to follow...

“COMPANY CONFIDENTIAL - WAIT FOR OFFICIAL LAUNCH TO SHARE”

southco®

PRODUCTS INDUSTRIES RESOURCES

Electronic Actuation and Door Status Monitoring are now possible in rugged applications



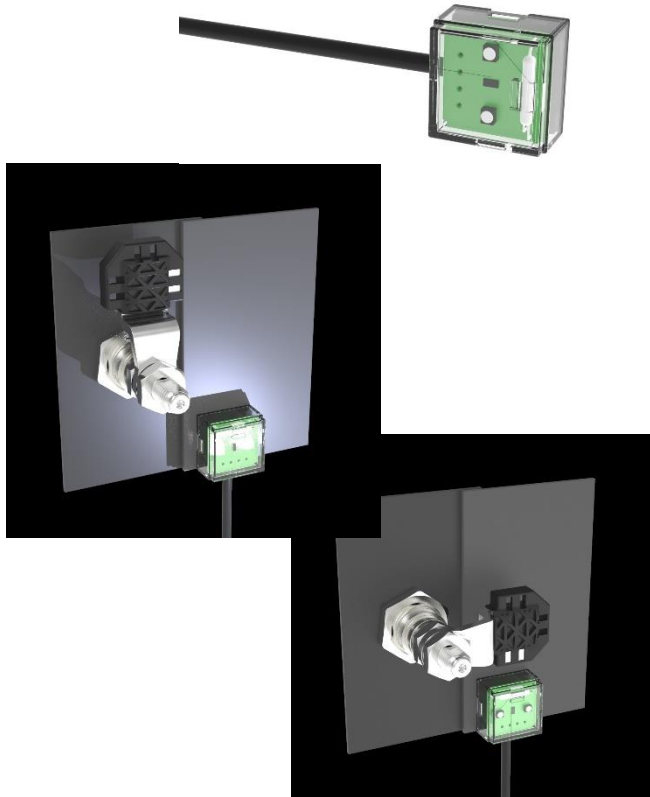
The R4-25 Rotary Latch is our most versatile yet!

- Electronic actuation options from wired to wireless
- Door status monitoring increases safety
- Integrated cable mount speeds installation
- Rugged design with 9000 N average ultimate load
- Top or side mount options



R4-50 Heavy-Duty Rotary Latch with Switch & Electronic Actuator

- High Strength - FMVSS 206 capable
- High Cycle Life - ideal for heavy-use applications
- High Speed - less than 1 second actuation speed
- High Security - integrated door status feedback sensor reads striker presence
- Large pawl opening - supports striker self-alignment for large / flexible panels
- Electronic actuator and switch sealed to IP65 - challenging environments
- Capable of operating with vehicle power system
- Accommodates high mechanical loads – gasketed door applications
- Economical solution for achieving high strength electronic access control
- Efficient gear motor driven actuator



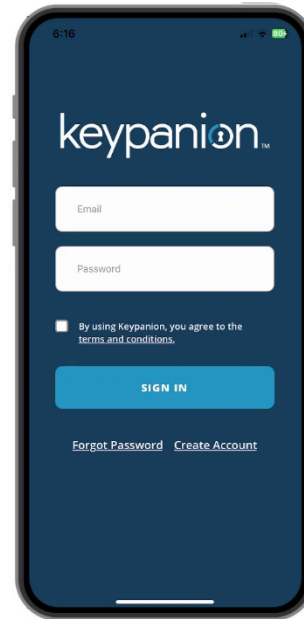
ES-01

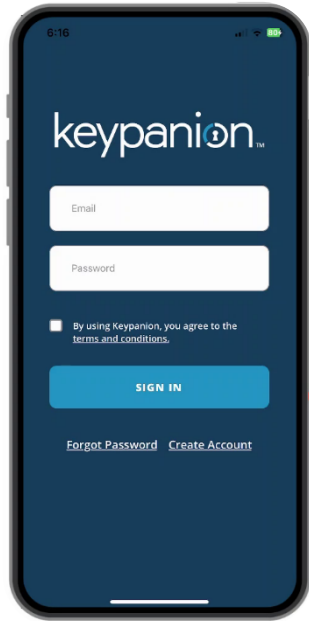
- Indicates that both the door AND latch are secure offering improved security over traditional door sensors
- Integrated LED provides interior illumination improving work environment and reducing components
- Simple installation reduces installation time and cost
- Enables our customer's IoT journey providing data for analytics and improved understand of product usage
- Contactless sensor works with E5 adjustable grip cam latch (enter CPB for other latches)
- IP-67 Sealed, -40 to 80 C Temperature Range



Bluetooth Controller

- Enables secure wireless monitoring and control of various Southco electromechanical latches
- Provides a complete end to end access control system when used with the Keypanion™ app
- Customers can use our API and integrate the controller with their existing mobile app or Bluetooth enabled device
- Quick plug and play installation reduces setup cost
- Several battery friendly configurations available
- EA-BT-4043-10-XX



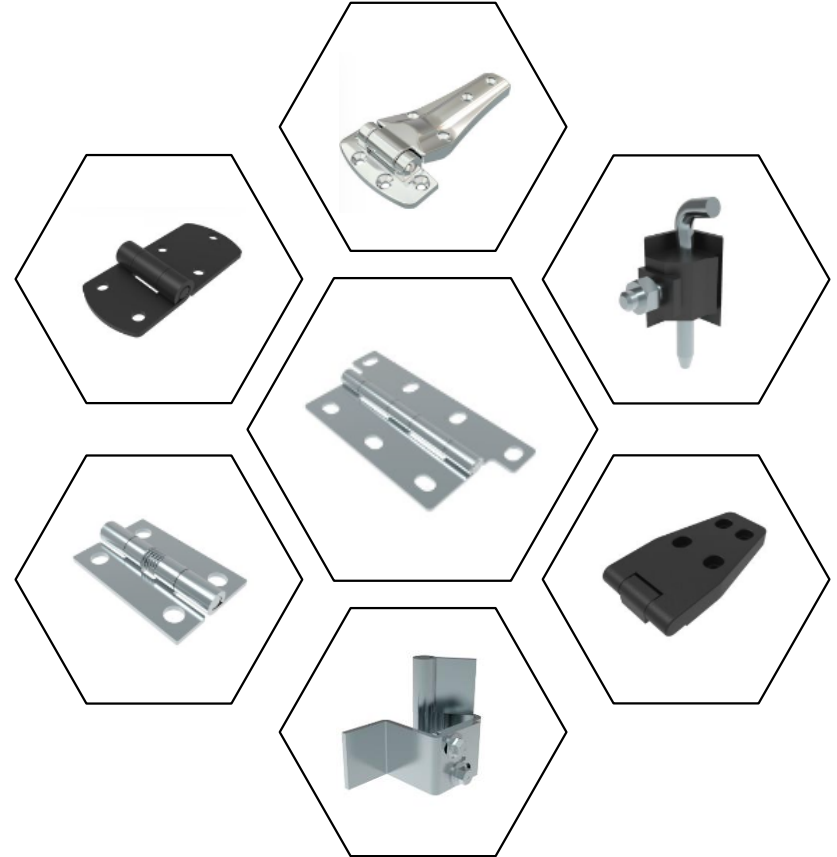


Keypanion™ Mobile App

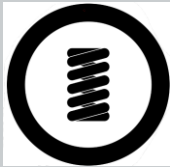
- Enables the sharing of digital keys to grant access to equipment from anywhere in the world via a mobile phone
- Access can be scheduled to specific times, dates, days of the week to restrict access to only when needed
- Provides 14 days of access history for monitoring of activity
- Removes the need for physical keys, reducing costs and simplifying the process
- Intuitive interface with quick setup
- Works with Southco's EA-BT-4043-10-XX Bluetooth controller
- Access control as easy as one two key!

Darshana Hinge Integration

- Hinges is the Second and Biggest product category for integration of acquired company-[Darshana](#)
- Line extension of EH,N6,F6,KH,G6,96 hinges



Heavy Duty Hinges



Spring Assist Hinges

2024-0034: Heavy Duty hinges [13 items]

- Wirtgen Vogele Radiator grill



ACE backhoe Engine hood



- High strength durable steel hinges for heavyweight applications
- Adjustable and slotted mounting options for correct fitting of heavier doors
- Can be coated in durable and customized finishes
- Target markets: Off highway / Construction equipment, Refrigeration Hinges

2024-0035: Spring assist hinges [5 items]



Spring hinge for
Dustbin Flap



Scissor lifts

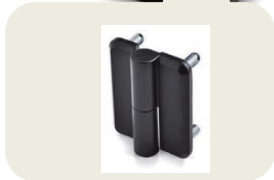


Battery storage doors



- Allows self-close or self-open functionality
- Steel, Stainless-steel and Die cast steel options
- Target markets- Rail industry, Scissor lifts, EV Battery doors

2024-0166: Lift-off [35 items]



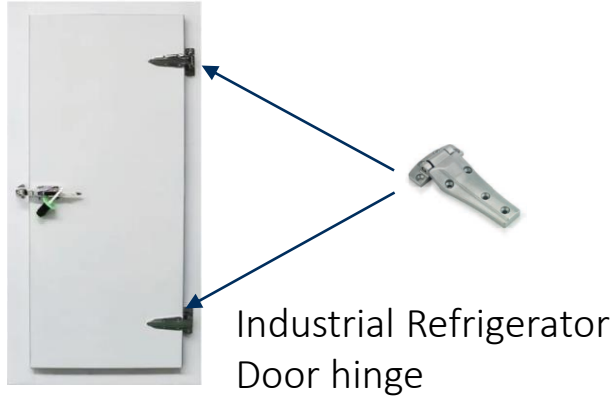
- Lightweight compact options for small removable doors
- Heavy duty options including greaseable versions for smooth operation of heavy doors
- Simple installation
- **Target markets:** Generators, Compressors, Data Racks

2024-0167: Corner & Removable hinges [51 items]

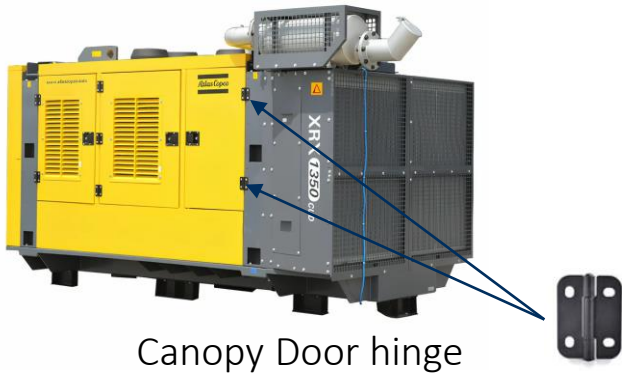


- Concealed, removable hinges for simple install and easy access
- Removable pin for simple door installation on the frame
- Range of materials and sizes to suit your application
- **Target markets:** Electrical Panels, Machine Guards, Automation. Control Panels

2024-0351: Strap hinges [45 items]



- Thin frame and larger door strap to suit larger door applications
- Plastic, Zinc, Steel and Stainless-Steel options for optimum weight, corrosion resistance and strength
- A range of size options to suit your application
- Target markets: HVAC, GLASS CABINS, Canopies, Refrigerators



2024-0352: Butt hinges [30 items]



Fuel Delivery vehicle



Robo Fencing doors



- Expands our range of butt hinges
- Lightweight robust hinges for small doors
- Range of sizes and styles to suit your application
- Target markets: Indoor enclosures, Control Panels, Automation Channels

Darshana Hinge Integration

- We are all Set for Global sales of Darshana Hinges through Southco's Global network.
- All 320 hinges are now available on Southco.com
- In this project we are launching 140 Hinges.



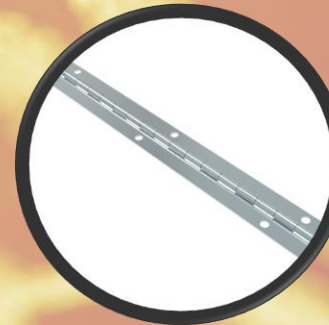
Flat Hinges.



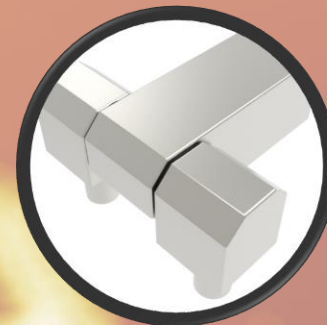
Butt Hinges.



Profile Hinges.



Piano Hinges.



180° Hinges.

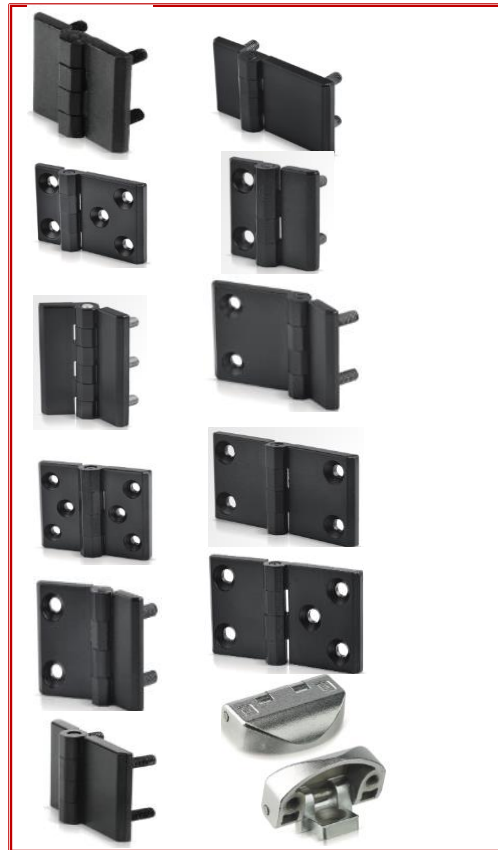
2024-0676: Flat Hinges-1 [37 items]

Generator Enclosure



- PR / Launch email value proposition of product group:
- Lightweight robust hinges for small doors
- Range of sizes and styles to suit your application
- Target markets
- Indoor enclosures
- Industrial small covers
- Generator manufacturers

2024-0677: Flat Hinges-2 [28 items]



- PR / Launch email value proposition of product group:
- Lightweight robust hinges for small doors
- Range of sizes and styles to suit your application
- Target markets
 - Indoor enclosures
 - Industrial small covers
 - Generator manufacturers

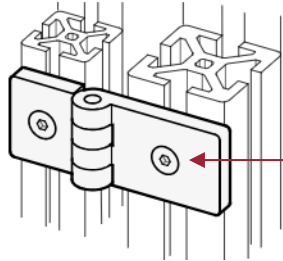
2024-0815: Butt hinges-2 [27 items]

ABS (Acrylonitrile Butadiene Styrene) enclosure



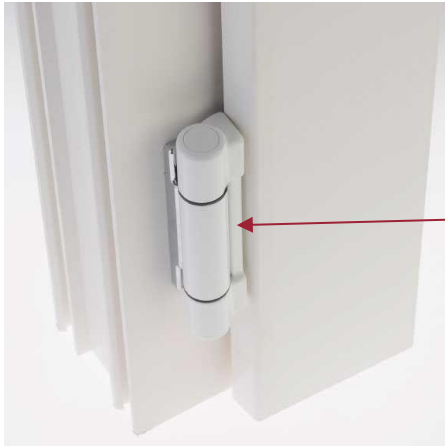
- Expands our range of butt hinges
- Lightweight robust hinges for small doors
- Range of sizes and styles to suit your application
- Target markets: indoor enclosures

2024-0816: Profile hinges [19 items]



- Simple hinges to suit industry standard profiles
- Lightweight
- Lift-off and adjustable mount hinge options
- Detent options to hold the door in an open position
- Target markets: industrial equipment

2024-0817: 180° hinges [22 items]



- >180° rotation of doors
- Range of materials for optimum durability and corrosion resistance
- Through hole and threaded stud mounting options
- Target markets : Control Panels

2024-0818: Piano hinges [7 items]



Metro joints



- Low profile hinges
- Spreads load across the whole door to prevent door sag
- Available in steel or stainless steel for maximum durability
- Target markets: Weldable Doors, Tall Control Panels, Data Racks, Electrical Panels.



Heavy Duty & Spring assist hinges

Recently Launched
Ajinkya Kulkarni

SHAPING
OUR FUTURE
GSM 2023

Heavy Duty hinges



Cast Hinges

- High Strength
- Black Powder coated
- Available in Holes and slotted version



Stamped hinges

- Adjustable and slotted mounting options for correct fitting of heavier doors

Spring Assist hinges



Stamped hinges

- Allows self-close or self-open functionality
- Steel or stainless-steel options



Cast Hinges

- High Strength
- Black Powder coated
- Available in Holes and slotted version



Stamped hinges

- Adjustable and slotted mounting options for correct fitting of heavier doors