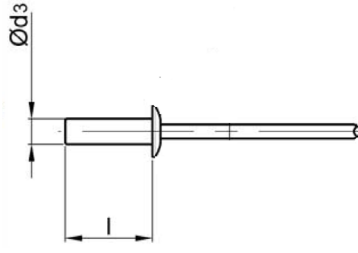
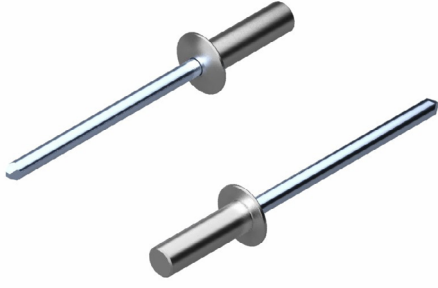
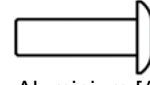


SIZDIRMAZ PERÇİN AL/ST BOMBE KAFA

SEALED RIVET AL/ST DOME HEAD

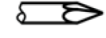


Alüminyum [AlMg3,5]
Parlatılmış


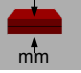


Aluminium [AlMg3,5]
Polished

Çelik
Fosfatlanmış



Steel
Phosphated

Ø d3			l [+1/-2] [mm]		ÜRÜN NO PART NO		
3,2 [+0.08]	Ø 3,3	$\begin{matrix} \updownarrow \\ \text{[N]} : 1.250 \\ \rightleftarrows \\ \text{[N]} : 1.070 \end{matrix}$	6,5	0,5 - 2,0	01.031211.32065		
			8,0	2,0 - 3,5	01.031211.32080*		
			9,5	3,5 - 5,0	01.031211.32095		
			10,7	5,0 - 6,5	01.031211.32107		
			12,7	6,5 - 8,0	01.031211.32127		
4,0 [+0.08]	Ø 4,1	$\begin{matrix} \updownarrow \\ \text{[N]} : 2.240 \\ \rightleftarrows \\ \text{[N]} : 1.700 \end{matrix}$	8,0	0,5 - 3,5	01.031211.40080		
			9,5	3,5 - 4,5	01.031211.40095		
			11,0	4,5 - 6,5	01.031211.40110		
			12,7	6,5 - 8,0	01.031211.40127		
			15,0	8,0 - 10,5	01.031211.40157		
4,8 [+0.08]	Ø 4,9	$\begin{matrix} \updownarrow \\ \text{[N]} : 3.100 \\ \rightleftarrows \\ \text{[N]} : 2.200 \end{matrix}$	8,0	1,0 - 3,0	01.031211.48080		
			9,5	3,0 - 4,5	01.031211.48095		
			11,0	4,5 - 6,0	01.031211.48110		
			12,5	6,0 - 7,5	01.031211.48125		
			14,0	7,5 - 9,0	01.031211.48140		
			16,0	9,0 - 11,0	01.031211.48160		
			18,0	11,0 - 13,0	01.031211.48180		
			21,0	13,0 - 16,0	01.031211.48210		
25,0	16,0 - 20,0	01.031211.48250					

