

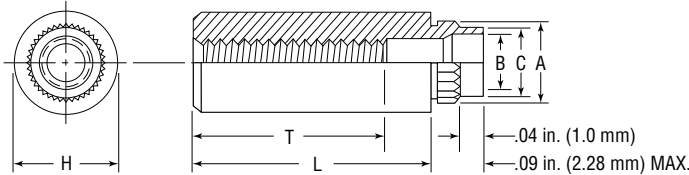


Flare Mounted Threaded Standoffs

Series CKFB3



CKFB3 flare mounted threaded standoffs provide a flared shank for stronger holding power and are used for spacing or stacking PC boards.

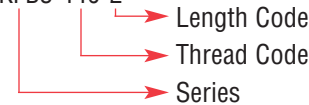


Series	Material	Finish
CKFB3	Brass CDA-360	Electro Tin Plating ASTM B545 Class B (Zinc* Optional)

Part Number Structure:

*See Finish Spec. on Page 6.

CKFB3 440-2



Thread: Internal 2B ANSI B1.1 (6H, ANSI/ASME B1.13M).
Use in: Materials with Rockwell Hardness of B-65 or less.

Dimensions & Specifications

INCH (in.)	Thread Size	Part Number	Length $\pm .005$ in.								A $\pm .003$	C Max.	B $\pm .003$	H $\pm .005$	+.005 -.001	Min.	Min.	
			.0625	.125	.1875	.250	.3125	.375	.500	.625								.750
			-2	-4	-6	-8	-10	-12	-16	-20								-20*
	#4-40	CKFB3440	-2	-4	-6	-8	-10	-12	-16	-20	.179	.165	.122	.22	.166	.17	.050	
	#6-32	CKFB3632	-2	-4	-6	-8	-10	-12	-16	-20*	.226	.212	.171	.28	.213	.22	.065	
	"T" Minimum thread length		Full						.375 $\pm .015$									

Dimensions & Specifications

METRIC (mm)	Thread Size	Part Number	Length $\pm .13$ mm								A $\pm .08$	C Max.	B $\pm .08$	H $\pm .13$	+.13 -.03	Min.	Min.	
			2	3	4	6	8	10	12	14								16
			-2	-3	-4	-6	-8	-10	-12	-14								-16
	M3x0.5	CKFB3M3	-2	-3	-4	-6	-8	-10	-12	-14	4.55	4.22	3.20	5.56	4.2	4.33	1.27	
	M4x0.7	CKFB3M4	-2	-3	-4	-6	-8	-10	-12	-14	6.68	6.40	5.23	8.74	6.4	6.36	1.65	
	"T" Minimum thread length		Full						9.5 $\pm .4$									

Installation & Performance Data

		Fiberglass .060 in. (1.5 mm)			
Thread Size		Installation Force (lbs.)	Pushout (lbs.)	Torque-out (in.-lbs.)	
INCH (in.)	#4-40	1000	140	18	
	#6-32	1500	170	28	
Thread Size		Installation Force (kN)	Pushout (N)	Torque-out (N•m)	
METRIC (mm)	M3	4.4	560	2.02	
	M4	6.0	680	3.20	