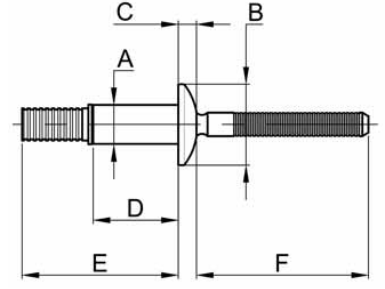
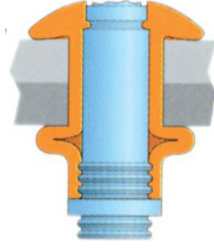
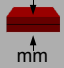



MAGNA-BULB ÇELİK BOMBE KAFA

MAGNA-BULB STEEL DOME HEAD



ÜRÜN NO PART NO	 mm	 [mm]	A	B	C	D	E	F
MBP-R6-M1Ø	1,02 - 2,41					8,89	15,80	
MBP-R6-M2Ø	1,19 - 2,79					8,89	15,80	
MBP-R6-M3	2,21 - 3,81					9,91	16,79	
MBP-R6-M4	3,20 - 4,80					10,90	17,81	
MBP-R6-M5	4,19 - 5,79					11,89	18,75	
MBP-R6-M6	5,21 - 6,81	4,85 - 5,11	4,75	9,78	2,57	12,90	19,86	25,40
MBP-R6-M7	6,20 - 7,80					13,89	20,85	
MBP-R6-M8	7,19 - 8,81					14,91	21,87	
MBP-R6-M9	8,20 - 9,80					15,90	22,86	
MBP-R6-M10	9,19 - 10,80					16,89	23,85	
MBP-R8-M2	1,52 - 3,51					11,48	20,07	
MBP-R8-M3	2,79 - 4,80					12,75	22,61	
MBP-R8-M4	3,81 - 5,82					13,77	23,19	
MBP-R8-M5	4,80 - 6,81					14,76	23,88	
MBP-R8-M6	5,82 - 7,82					15,77	25,40	
MBP-R8-M7	6,81 - 8,79					16,76	26,42	
MBP-R8-M8	7,82 - 9,83	6,63 - 6,91	6,38	13,46	3,18	17,78	27,43	27,94
MBP-R8-M9	8,79 - 10,80					18,77	28,45	
MBP-R8-M10	9,83 - 11,84					19,79	29,46	
MBP-R8-M11	10,80 - 12,80					20,78	30,48	
MBP-R8-M12	11,84 - 13,84					21,79	31,50	
MBP-R8-M13	12,80 - 14,81					22,78	32,51	
MBP-R12-M3	12,80 - 6,35	8,82 - 8,64	8,03	16,64	3,86		28,32	34,93

Kesme Kopma Değerleri (N)

Shear Tensile Values (N)

	ÇAP Ø	KESME	KOPMA
	4,8	7560	4890
	6,4	16010	8900
	7,9	22240	13340