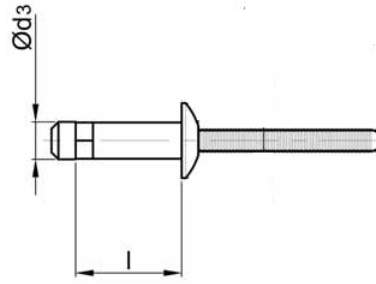
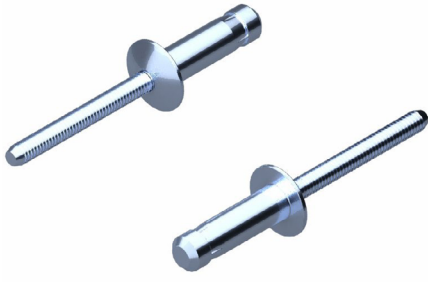
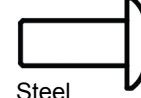


ONLOCK PERÇİN ST-ST BOMBE Kafa

ONLOCK RIVET ST-ST DOME HEAD

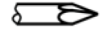


Çelik
Çinko Kaplama


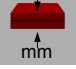


Steel
Zinc Plated

Çelik
Çinko Kaplama



Steel
Zinc Plated

Ø d3			l [+1/-2] [mm]		ÜRÜN NO PART NO
4,8 [+0.01]	Ø 4,9 - 5,1	\updownarrow [N] : 360 \leftrightarrow [N] : 640	9,0	1,5 - 3,5	01.102211.48090
			11,5	3,5 - 6,0	01.102211.48115
			14,0	6,0 - 8,5	01.102211.48140
			16,5	8,5 - 11,0	01.102211.48165
			19,0	11,0 - 13,5	01.102211.48190
6,4 [+0.01]	Ø 6,6 - 6,8	\updownarrow [N] : 660 \leftrightarrow [N] : 1140	9,0	1,5 - 3,5	01.102211.64090
			10,5	2,8 - 4,8	01.102211.64105
			11,1	3,4 - 5,4	01.102211.64111
			12,5	4,8 - 6,8	01.102211.64125
			14,5	6,8 - 8,8	01.102211.64145
			16,5	8,8 - 10,8	01.102211.64165
			18,5	10,8 - 12,8	01.102211.64185
			20,5	12,8 - 14,8	01.102211.64205
			22,5	14,8 - 16,8	01.102211.64224
			24,5	16,8 - 18,8	01.102211.64245
			26,5	18,8 - 20,8	01.102211.64265
7,8	Ø 8,0 - 8,3	\updownarrow [N] : 930 \leftrightarrow [N] : 1600	13,5	4,0 - 7,0	01.102211.78135
			16,5	7,0 - 10,0	01.102211.78165
			19,5	10,0 - 13,0	01.102211.78195
			22,5	13,0 - 16,0	01.102211.78225
			25,5	16,0 - 19,0	01.102211.78255
			28,5	19,0 - 22,0	01.102211.78285
			31,5	22,0 - 25,0	01.102211.78315

