
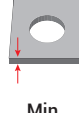
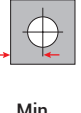



Malzeme / Material : Alüminyum 6061 / Aluminium 6061

Ölçülendirme / Dimensions									Kuvvet / Forces	Ürün / Product
Çap Diameter	 +0.13 -0.03	Boy Length ±0.4mm L	 Min.	 Min.	B ±0.13	C -0.13	H Nom.	D ±0.25	Max. Nut Tightening Torque Max. Somun Sıkma Torku (N-m)	 04.SOA00
M3X0.5	4.22	3	1	6.0	3.2	4.2	4.8	-	0.55	04.SOA00.M03003
		4								04.SOA00.M03004
		6								04.SOA00.M03006
		8								04.SOA00.M03008
		10								04.SOA00.M03010
		12								04.SOA00.M03012
		14								04.SOA00.M03014
		16								04.SOA00.M03016
		18								04.SOA00.M03018

* Tüm ölçüler mm cinsindedir. / All dimensions are in mm

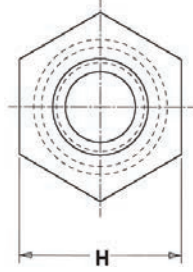
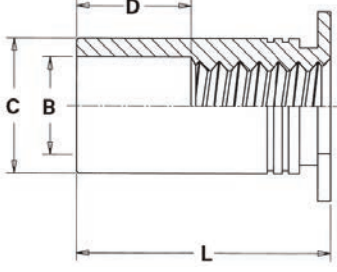
* Tüm boy ölçülerinde [+0,1/-0,5] mm tolerans değeri olasıdır. / A tolerance value of [+0,1/-0,5] mm is possible for all length dimensions

* 1,5 mm veya daha az malzeme kalınlığı için örste bir havşa deliği gereklidir. / For material thickness of 1.5mm or less, a countersunk hole is needed in the anvil.


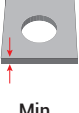

* 1,5 mm veya daha fazla malzeme kalınlığı için örste bir geçiş deliği gereklidir. / For material thickness of 1.5mm or more, a through-hole is needed in the anvil

* Uygulama videosu için QR kodu okutun. / Scan the QR code for the application video.





Malzeme / Material : Alüminyum 6061 / Aluminium 6061

Ölçülendirme / Dimensions									Kuvvet / Forces	Ürün / Product
Çap Diameter	 +0.08	Boy Length +0.5mm -0.13mm	 Min.	 Min.	B ±0.13	C -0.13	H Nom.	D ±0.25	Max. Nut Tightening Torque Max. Somun Sıkma Torku (N-m)	 04.SOA00
M3.5X0.6	5.41	3	1	6.8	3.2	5.39	6.4	4	0.33	04.SOA00.M03503
		4								04.SOA00.M03504
		6								04.SOA00.M03506
		8								04.SOA00.M03508
		10								04.SOA00.M03510
		12								04.SOA00.M03512
		14								04.SOA00.M03514
		16								04.SOA00.M03516
		18								04.SOA00.M03518
		20								04.SOA00.M03518
		22								04.SOA00.M03522
		25								04.SOA00.M03525

* Tüm ölçüler mm cinsindedir. / All dimensions are in mm

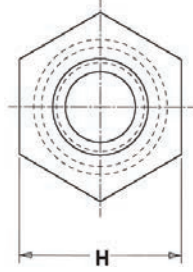
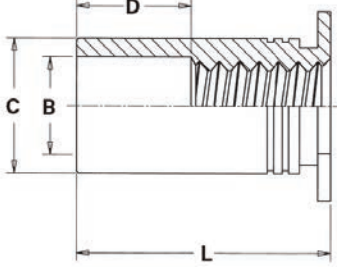
* Tüm boy ölçülerinde [+0,1/-0,5] mm tolerans değeri olasıdır. / A tolerance value of [+0,1/-0,5] mm is possible for all length dimensions

* 1,5 mm veya daha az malzeme kalınlığı için örste bir havşa deliği gereklidir. / For material thickness of 1.5mm or less, a countersunk hole is needed in the anvil.


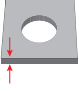
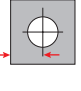

* 1,5 mm veya daha fazla malzeme kalınlığı için örste bir geçiş deliği gereklidir. / For material thickness of 1.5mm or more, a through-hole is needed in the anvil

* Uygulama videosu için QR kodu okutun. / Scan the QR code for the application video.





Malzeme / Material : Alüminyum 6061 / Aluminium 6061

Ölçülendirme / Dimensions									Kuvvet / Forces	Ürün / Product
Çap Diameter	 +0.08	Boy Length +0.5mm -0.13mm	 Min.	 Min.	B ±0.13	C -0.13	H Nom.	D ±0.25	Max. Nut Tightening Torque Max. Somun Sıkma Torku (N-m)	 04.SOA00
M4X0.7	7.14	3	1.27	8.0	4.8	7.12	7.9	-	1.20	04.SOA00.M04003
		4								04.SOA00.M04004
		6								04.SOA00.M04006
		8								04.SOA00.M04008
		10								04.SOA00.M04010
		12								04.SOA00.M04012
		14								04.SOA00.M04014
		16								04.SOA00.M04016
		18								04.SOA00.M04018
		20								04.SOA00.M04018
		22								04.SOA00.M04022
		25								04.SOA00.M04025

* Tüm ölçüler mm cinsindedir. / All dimensions are in mm

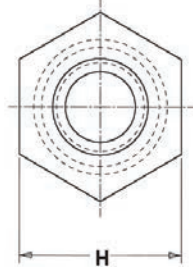
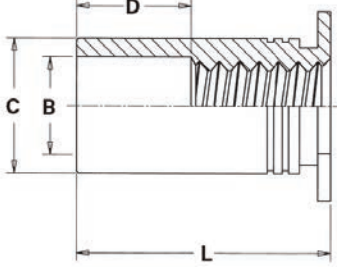
* Tüm boy ölçülerinde [+0,1/-0,5] mm tolerans değeri olasıdır. / A tolerance value of [+0,1/-0,5] mm is possible for all length dimensions

* 1,5 mm veya daha az malzeme kalınlığı için örste bir havşa deliği gereklidir. / For material thickness of 1.5mm or less, a countersunk hole is needed in the anvil.


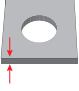
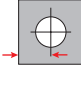

* 1,5 mm veya daha fazla malzeme kalınlığı için örste bir geçiş deliği gereklidir. / For material thickness of 1.5mm or more, a through-hole is needed in the anvil

* Uygulama videosu için QR kodu okutun. / Scan the QR code for the application video.





Malzeme / Material : Alüminyum 6061 / Aluminium 6061

Ölçülendirme / Dimensions									Kuvvet / Forces	Ürün / Product
Çap Diameter	 +0.08	Boy Length +0.5mm -0.13mm	 Min.	 Min.	B ±0.13	C -0.13	H Nom.	D ±0.25	Max. Nut Tightening Torque Max. Somun Sıkma Torku (N-m)	 04.SOA00
M5X0.8	7.14	3	1.27	8.0	5.35	7.12	7.9	4	2.16	04.SOA00.M05003
		4								04.SOA00.M05004
		6								04.SOA00.M05006
		8								04.SOA00.M05008
		10								04.SOA00.M05010
		12								04.SOA00.M05012
		14								04.SOA00.M05014
		16								04.SOA00.M05016
		18								04.SOA00.M05018
		20								04.SOA00.M05018
		22								04.SOA00.M05022
		25								04.SOA00.M05025

* Tüm ölçüler mm cinsindedir. / All dimensions are in mm

* Tüm boy ölçülerinde [+0,1/-0,5] mm tolerans değeri olasıdır. / A tolerance value of [+0,1/-0,5] mm is possible for all length dimensions

* 1,5 mm veya daha az malzeme kalınlığı için örste bir havşa deliği gereklidir. / For material thickness of 1.5mm or less, a countersunk hole is needed in the anvil.

* 1,5 mm veya daha fazla malzeme kalınlığı için örste bir geçiş deliği gereklidir. / For material thickness of 1.5mm or more, a through-hole is needed in the anvil

* Uygulama videosu için QR kodu okutun. / Scan the QR code for the application video.

