
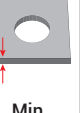
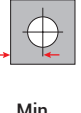



Malzeme / Material : Isıl İşlem Görmüş Karbon Çelik Çinko Kaplama / Heat-Treated Carbon Steel Zinc Plated

Ölçülendirme / Dimensions								Kuvvet / Forces	Ürün / Product	
Çap Diameter	 +0.13 -0.03	Boy Length ±0.4mm L	 Min.	 Min.	B ±0.13	C -0.13	H Nom.	D ±0.25	Max. Nut Tightening Torque Max. Somun Sıkma Torku (N-m)	 04.S0000
M3X0.5	4.22	3	1	6.0	3.2	4.2	4.8	-	0.55	04.S0000.M03003
		4								04.S0000.M03004
		6								04.S0000.M03006
		8								04.S0000.M03008
		10								04.S0000.M03010
		12								04.S0000.M03012
		14								04.S0000.M03014
		16								04.S0000.M03016
		18								04.S0000.M03018

* Tüm ölçüler mm cinsindedir. / All dimensions are in mm

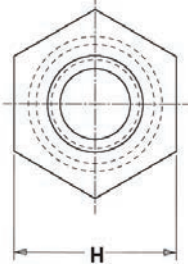
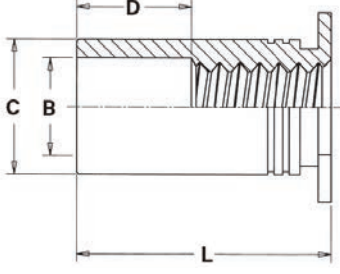
* Tüm boy ölçülerinde [+0,1/-0,5] mm tolerans değeri olasıdır. / A tolerance value of [+0,1/-0,5] mm is possible for all length dimensions

* 1,5 mm veya daha az malzeme kalınlığı için örste bir havşa deliği gereklidir. / For material thickness of 1.5mm or less, a countersunk hole is needed in the anvil.

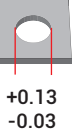

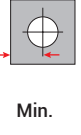

* 1,5 mm veya daha fazla malzeme kalınlığı için örste bir geçiş deliği gereklidir. / For material thickness of 1.5mm or more, a through-hole is needed in the anvil

* Uygulama videosu için QR kodu okutun. / Scan the QR code for the application video.





Malzeme / Material : Isıl İşlem Görmüş Karbon Çelik Çinko Kaplama / Heat-Treated Carbon Steel Zinc Plated

Ölçülendirme / Dimensions									Kuvvet / Forces	Ürün / Product
Çap Diameter		Boy Length ±0.4mm L			B ±0.13	C -0.13	H Nom.	D ±0.25	Max. Nut Tightening Torque Max. Somun Sıkma Torku (N-m)	
M3.5X0.6	5.41	3	1	6.8	3.9	5.39	6.4	-	0.91	04.S0000.M03503
		4								04.S0000.M03504
		6								04.S0000.M03506
		8								04.S0000.M03508
		10								04.S0000.M03510
		12								04.S0000.M03512
		14								04.S0000.M03514
		16								04.S0000.M03516
		18								04.S0000.M03518
		20								04.S0000.M03520
		22								04.S0000.M03522
		25								04.S0000.M03525

* Tüm ölçüler mm cinsindedir. / All dimensions are in mm

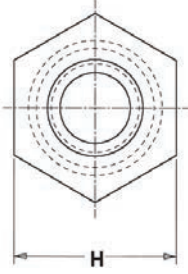
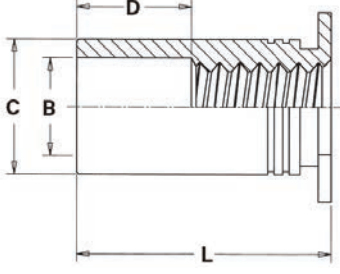
* Tüm boy ölçülerinde [+0,1/-0,5] mm tolerans değeri olasıdır. / A tolerance value of [+0,1/-0,5] mm is possible for all length dimensions

* 1,5 mm veya daha az malzeme kalınlığı için öerste bir havşa deliği gereklidir. / For material thickness of 1.5mm or less, a countersunk hole is needed in the anvil.

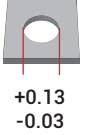
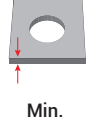
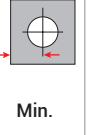

* 1,5 mm veya daha fazla malzeme kalınlığı için öerste bir geçiş deliği gereklidir. / For material thickness of 1.5mm or more, a through-hole is needed in the anvil

* Uygulama videosu için QR kodu okutun. / Scan the QR code for the application video.





Malzeme / Material : Isıl İşlem Görmüş Karbon Çelik Çinko Kaplama / Heat-Treated Carbon Steel Zinc Plated

Ölçülendirme / Dimensions									Kuvvet / Forces	Ürün / Product
Çap Diameter		Boy Length ±0.4mm L			B ±0.13	C -0.13	H Nom.	D ±0.25	Max. Nut Tightening Torque Max. Somun Sıkma Torku (N-m)	
M4X0.7	7.14	3	1.27	8.0	4.8	7.12	7.9	-	2.00	04.S0000.M04503
		4								04.S0000.M04504
		6								04.S0000.M04506
		8								04.S0000.M04508
		10								04.S0000.M04510
		12								04.S0000.M04512
		14								04.S0000.M04514
		16								04.S0000.M04516
		18								04.S0000.M04518
		20								04.S0000.M04520
		22								04.S0000.M04522
		25								04.S0000.M04525

* Tüm ölçüler mm cinsindedir. / All dimensions are in mm

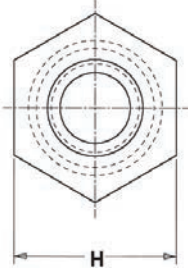
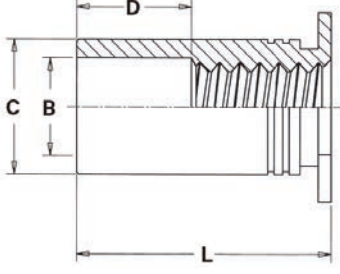
* Tüm boy ölçülerinde [+0,1/-0,5] mm tolerans değeri olasıdır. / A tolerance value of [+0,1/-0,5] mm is possible for all length dimensions

* 1,5 mm veya daha az malzeme kalınlığı için örste bir havşa deliği gereklidir. / For material thickness of 1.5mm or less, a countersunk hole is needed in the anvil.

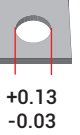

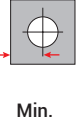

* 1,5 mm veya daha fazla malzeme kalınlığı için örste bir geçiş deliği gereklidir. / For material thickness of 1.5mm or more, a through-hole is needed in the anvil

* Uygulama videosu için QR kodu okutun. / Scan the QR code for the application video.





Malzeme / Material : Isıl İşlem Görmüş Karbon Çelik Çinko Kaplama / Heat-Treated Carbon Steel Zinc Plated

Ölçülendirme / Dimensions									Kuvvet / Forces	Ürün / Product
Çap Diameter		Boy Length ±0.4mm L			B ±0.13	C -0.13	H Nom.	D ±0.25	Max. Nut Tightening Torque Max. Somun Sıkma Torku (N-m)	
M5X0.8	7.14	3	1.27	8.0	5.35	7.12	7.9	-	3.60	04.S0000.M05503
		4								04.S0000.M05504
		6								04.S0000.M05506
		8								04.S0000.M05508
		10								04.S0000.M05510
		12								04.S0000.M05512
		14								04.S0000.M05514
		16								04.S0000.M05516
		18								04.S0000.M05518
		20								04.S0000.M05520
		22								04.S0000.M05522
		25								04.S0000.M05525

* Tüm ölçüler mm cinsindedir. / All dimensions are in mm

* Tüm boy ölçülerinde [+0,1/-0,5] mm tolerans değeri olasıdır. / A tolerance value of [+0,1/-0,5] mm is possible for all length dimensions

* 1,5 mm veya daha az malzeme kalınlığı için öerste bir havşa deliği gereklidir. / For material thickness of 1.5mm or less, a countersunk hole is needed in the anvil.

* 1,5 mm veya daha fazla malzeme kalınlığı için öerste bir geçiş deliği gereklidir. / For material thickness of 1.5mm or more, a through-hole is needed in the anvil

* Uygulama videosu için QR kodu okutun. / Scan the QR code for the application video.

