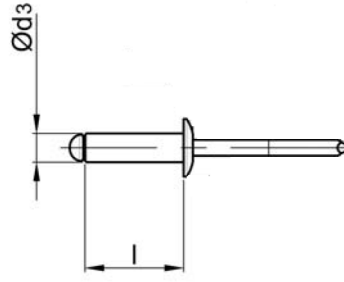
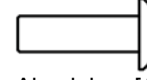


STANDART PERÇİN AL/ST BOMBE Kafa

OPEN TYPE AL/ST DOME HEAD



Alüminyum [AlMg3,5]
Parlatılmış


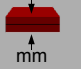


Aluminium [AlMg3,5]
Polished

Çelik
Çinko Kaplama



Steel
Zink Plated

Ø d3	 [mm]		l [+1/-1] [mm]	 mm	ÜRÜN NO PART NO	
* 2,4 [+0.08/-0.15]	Ø 2,5	⇕ [N] : 355 ⇔ [N] : 315	4,0	- 2,0	01.011211.24040	
			6,0	2,0 - 4,0	01.011211.24060	
			8,0	4,0 - 6,0	01.011211.24080	
			10,0	6,0 - 8,0	01.011211.24100	
3,0 [+0.08/-0.15]	Ø 3,1	⇕ [N] : 810 ⇔ [N] : 620	4,0	- 1,5	01.011211.30040	
			6,0	1,5 - 3,5	01.011211.30060	
			8,0	3,5 - 5,0	01.011211.30080*	
			10,0	5,0 - 7,0	01.011211.30100	
3,2 [+0.08/-0.15]	Ø 3,3	⇕ [N] : 980 ⇔ [N] : 760	4,0	- 1,5	01.011211.32040	
			6,0	1,5 - 3,5	01.011211.32060	
			8,0	3,5 - 5,0	01.011211.32080	
			10,0	5,0 - 7,0	01.011211.32100	
4,0 [+0.08/-0.15]	Ø 4,1	⇕ [N] : 1.600 ⇔ [N] : 1.200	12,0	6,5 - 8,5	01.011211.40120	
			14,0	8,5 - 10,5	01.011211.40140	
			16,0	8,5 - 12,5	01.011211.40160	
			18,0	12,5 - 14,5	01.011211.40180	
4,8 [+0.08/-0.15]	Ø 4,9	⇕ [N] : 2.230 ⇔ [N] : 1.690	6,0	1,0 - 2,5	01.011211.48060	
			8,0	2,5 - 4,5	01.011211.48080	
			10,0	4,0 - 6,0	01.011211.48100	
			12,0	6,0 - 8,0	01.011211.48120	
			14,0	8,0 - 10,0	01.011211.48140	
			16,0	8,0 - 12,0	01.011211.48160	
			18,0	12,0 - 14,0	01.011211.48180	
			20,0	12,0 - 16,0	01.011211.48200	
			25,0	16,0 - 21,0	01.011211.48250	
			30,0	21,0 - 25,0	01.011211.48300	
6,0 [+0.08/-0.15]	Ø 6,1	⇕ [N] : 3.900 ⇔ [N] : 3.000	10,0	3,0 - 6,0	01.011211.60100	
			12,0	5,0 - 7,0	01.011211.60120	
			14,0	7,0 - 9,0	01.011211.60140	
			16,0	7,0 - 11,0	01.011211.60160	
			18,0	11,0 - 13,0	01.011211.60180*	
			22,0	13,0 - 17,0	01.011211.60220*	
			25,0	15,0 - 20,0	01.011211.60250	
			30,0	20,0 - 25,0	01.011211.60300*	



* İrtibata Geçiniz