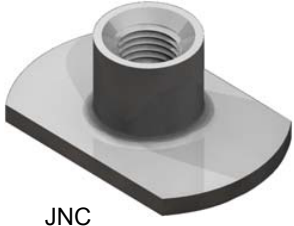


METAL PUNTA VE NORMAL TİP

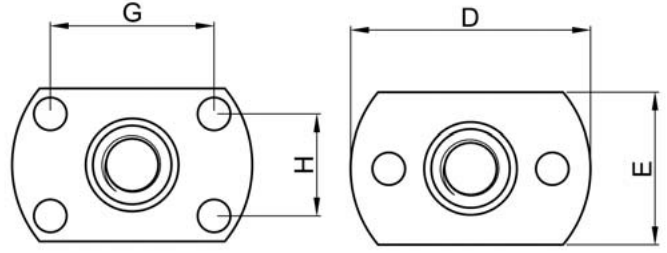
WELD NUTS - TEENUTS SLAB BASED



JNC

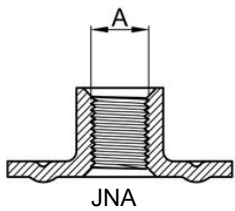


JNA

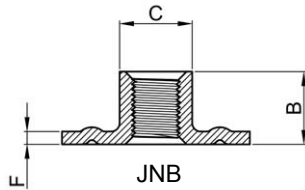


| A | B | C | D | E | F | G | H | I | J | ÜRÜN N. PART N. |
|-----|------|------|----|----|-----|----|----|-----|---|-----------------|
| M4 | 6,0 | 5,3 | 17 | 9 | 0,9 | 12 | | | 1 | JNA002 |
| M4 | 6,0 | 5,3 | 17 | 9 | 0,9 | 12 | | | 1 | JNB002 |
| M4 | 6,0 | 5,3 | 17 | 9 | 0,9 | | | | | JNC002 |
| M4 | 6,0 | 5,5 | 17 | 9 | 0,9 | 12 | | 2,3 | 1 | JND002 |
| M5 | 7,5 | 7,0 | 19 | 11 | 1,2 | 14 | | | 1 | JNA003 |
| M5 | 7,8 | 6,8 | 19 | 11 | 1,2 | 14 | | | 1 | JNB003 |
| M5 | 7,5 | 7,0 | 19 | 11 | 1,2 | | | | | JNC003 |
| M5 | 7,5 | 7,0 | 19 | 11 | 1,2 | 14 | | 2,6 | 1 | JND003 |
| M6 | 8,5 | 8,4 | 22 | 14 | 1,5 | 16 | | | 1 | JNA006 |
| M6 | 8,5 | 8,4 | 22 | 14 | 1,5 | 16 | | | 1 | JNB006 |
| M6 | 8,5 | 8,4 | 22 | 14 | 1,5 | | | | | JNC006 |
| M6 | 8,5 | 8,4 | 22 | 14 | 1,5 | 16 | | 3,0 | 1 | JND006 |
| M8 | 8,5 | 10,1 | 22 | 14 | 1,5 | 16 | | | 1 | JNA009 |
| M8 | 8,5 | 10,1 | 22 | 14 | 1,5 | 16 | | | 1 | JNB009 |
| M8 | 8,5 | 10,1 | 22 | 14 | 1,5 | | | | | JNC009 |
| M8 | 8,5 | 10,1 | 22 | 14 | 1,5 | 16 | | 3,0 | 1 | JND009 |
| M8 | 8,5 | 10,1 | 22 | 14 | 1,5 | 14 | 8 | | 2 | JNA010 |
| M8 | 8,5 | 10,1 | 22 | 14 | 1,5 | 14 | 8 | | 2 | JNB010 |
| M8 | 10,0 | 10,8 | 26 | 18 | 1,8 | 16 | 10 | | 2 | JNA011 |
| M8 | 10,0 | 10,8 | 26 | 18 | 1,8 | 16 | 10 | | 2 | JNB011 |
| M8 | 10,0 | 10,8 | 26 | 18 | 1,8 | | | | | JNC011 |
| M8 | 10,0 | 10,8 | 26 | 18 | 1,8 | 16 | 10 | 3,5 | 2 | JND011 |
| M10 | 10,5 | 12,5 | 26 | 18 | 1,9 | 16 | 10 | | 2 | JNA015 |
| M10 | 10,5 | 12,5 | 26 | 18 | 1,9 | 16 | 10 | | 2 | JNB015 |
| M10 | 10,5 | 12,5 | 26 | 18 | 1,9 | | | | | JNC015 |
| M10 | 10,5 | 12,5 | 26 | 18 | 1,9 | 16 | 10 | 3,5 | 2 | JND015 |
| M12 | 12,5 | 15,2 | 29 | 20 | 2,2 | 17 | 13 | | 2 | JNA017 |
| M12 | 12,5 | 15,2 | 29 | 20 | 2,2 | 17 | 13 | | 2 | JNB017 |
| M12 | 12,5 | 15,2 | 29 | 20 | 2,2 | | | | | JNC017 |
| M12 | 12,5 | 15,2 | 29 | 20 | 2,2 | 17 | 13 | 3,8 | 2 | JND017 |

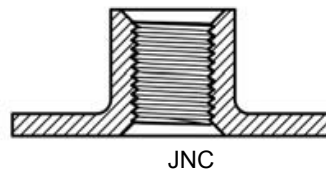
A = Diş Ölçüsü / Thread
J = Tip / Type



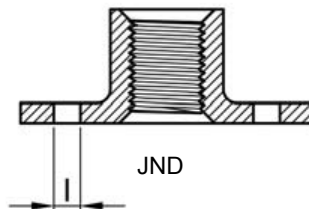
JNA



JNB



JNC



JND

