

**Gövde / Body** : Paslanmaz Çelik / Stainless Steel A2 (304B) Natural



**Çivi / Nail** : Paslanmaz Çelik / Stainless Steel A2 (304B) Natural

Ölçülendirme / Dimensions					Kuvvet / Forces		Ürün / Product				
Çap Diameter (D) [+0,08/-0,15]	Ø		Uzunluk Length (L) [+1/-0,2]	K (Max.)		dk (Max.)	dm (Max.)	Kesme Shear (N)	Kopma Tensile (N)	01.013311	
	Min.	Max.		Min.	Max.						
2.4	2.5 - 2.6		4.0	0.5 - 2.0		1.00	5.00	1.60	500	700	01.013311.24040
			6.0	2.0 - 4.0							01.013311.24060
			8.0	4.0 - 6.0							01.013311.24080
			10.0	6.0 - 8.0							01.013311.24100
			12.0	7.0 - 9.5							01.013311.24120
			14.0	8.0 - 11.5							01.013311.24140
			16.0	10.0 - 13.0							01.013311.24160
3.0	3.1 - 3.2		6.0	1.0 - 3.5		1.30	6.30	2.10	1800	2200	01.013311.30060
			8.0	3.5 - 5.0							01.013311.30080
			10.0	5.0 - 7.0							01.013311.30100
			12.0	7.0 - 9.0							01.013311.30120
			14.0	9.0 - 11.0							01.013311.30140
			16.0	9.0 - 12.5							01.013311.30160
			18.0	12.0 - 14.5							01.013311.30180
			20.0	13.0 - 16.5							01.013311.30200

\* Tüm ölçüler mm cinsindedir. / All dimensions in mm



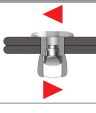
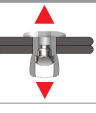

\* Ayrıca A4 (316LCu) olarak tedarik edilebilir. / Also can be supplied A4 (316LCu).

\* Tüm boy ölçülerinde [+0,1/-0,5] mm tolerans değeri olasıdır. / A tolerance value of [+0,1/-0,5] mm is possible for all length dimensions.

\* Uygulama videosu için QR kodu okutun. / \* Scan the QR code for the application video.

\* Daha fazla bilgi için lütfen bize ulaşın. satis@onurfix.com.tr / Please contact us for more information. satis@onurfix.com.tr



Ölçülendirme / Dimensions						Kuvvet / Forces		Ürün / Product			
Çap Diameter (D) [+0,08/-0,15]			Uzunluk Length (L) [+1/-0,2]			K (Max.)	dk (Max.)	dm (Max.)			
	Min.	Max.		Min.	Max.						
<b>3.2</b>	3.3 - 3.4	6.0	1.0 - 3.5	1.30	6.70	2.10	1900	2500	01.013311.32060		
		8.0	3.5 - 5.0						01.013311.32080		
		10.0	5.0 - 7.0						01.013311.32100		
		12.0	7.0 - 9.0						01.013311.32120		
		14.0	9.0 - 11.0						01.013311.32140		
		16.0	9.0 - 12.5						01.013311.32160		
		18.0	12.0 - 14.5						01.013311.32180		
		20.0	13.0 - 16.5						01.013311.32200		
		25.0	15.0 - 21.0						01.013311.32250		
<b>4.0</b>	4.1 - 4.2	6.0	1.0 - 3.0	1.70	8.40	2.60	2700	2500	01.013311.40060		
		8.0	3.0 - 5.0						01.013311.40080		
		10.0	4.0 - 6.5						01.013311.40100		
		12.0	6.0 - 8.5						01.013311.40120		
		14.0	7.0 - 10.5						01.013311.40140		
		16.0	8.0 - 12.5						01.013311.40160		
		18.0	10.0 - 14.5						01.013311.40180		
		20.0	12.0 - 16.0						01.013311.40200		
		25.0	16.0 - 21.0						01.013311.40250		
		30.0	21.0 - 26.0						01.013311.40300		
		35.0	26.0 - 30.5						01.013311.40350		
		40.0	30.5 - 35.0						01.013311.40400		
<b>4.8</b>	4.9 - 5.0	6.0	1.0 - 2.5	2.00	10.10	3.10	4000	5000	01.013311.48060		
		8.0	2.5 - 4.0						01.013311.48080		
		10.0	4.0 - 6.0						01.013311.48100		
		12.0	6.0 - 8.0						01.013311.48120		
		14.0	8.0 - 10.0						01.013311.48140		
		16.0	9.0 - 12.0						01.013311.48160		
		18.0	10.0 - 14.0						01.013311.48180		
		20.0	12.0 - 16.0						01.013311.48200		
		25.0	16.0 - 21.0						01.013311.48250		
		30.0	21.0 - 25.0						01.013311.48300		
		35.0	25.0 - 30.0						01.013311.48350		
		40.0	30.0 - 35.0						01.013311.48400		
		45.0	35.0 - 40.0						01.013311.48450		
		50.0	40.0 - 45.0						01.013311.48500		

\* Tüm ölçüler mm cinsindedir. / All dimensions in mm


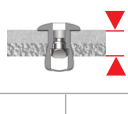
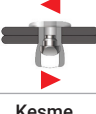
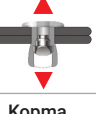

\* Ayrıca A4 (316LCu) olarak tedarik edilebilir. / Also can be supplied A4 (316LCu).

\* Tüm boy ölçülerinde [+0,1/-0,5] mm tolerans değeri olasıdır. / A tolerance value of [+0,1/-0.5] mm is possible for all length dimensions.

\* Uygulama videosu için QR kodu okutun. / \* Scan the QR code for the application video.

\* Daha fazla bilgi için lütfen bize ulaşın. satis@onurfix.com.tr / Please contact us for more information. satis@onurfix.com.tr



Ölçülendirme / Dimensions						Kuvvet / Forces		Ürün / Product			
Çap Diameter (D) [+0,08/-0,15]			Uzunluk Length (L) [+1/-0,2]			K (Max.)	dk (Max.)	dm (Max.)			
	Min.	Max.		Min.	Max.						
<b>6.0</b>	6.1 - 6.2	8.0	1.5 - 3.0	2.50	12.60	4.00	5700	7500	01.013311.60080		
		10.0	3.0 - 5.0							01.013311.60100	
		12.0	5.0 - 7.0							01.013311.60120	
		14.0	7.0 - 9.0							01.013311.60140	
		16.0	7.0 - 11.0							01.013311.60160	
		18.0	11.0 - 13.0							01.013311.60180	
		20.0	11.0 - 15.0							01.013311.60200	
		25.0	14.0 - 19.5							01.013311.60250	
		30.0	19.5 - 24.5							01.013311.60300	
		35.0	24.0 - 29.0							01.013311.60350	
		40.0	29.0 - 34.0							01.013311.60400	
<b>6.4</b>	6.5 - 6.6	8.0	1.5 - 3.0	2.70	13.40	4.20	7500	9300	01.013311.64080		
		10.0	2.0 - 4.0							01.013311.64100	
		12.0	3.0 - 6.0							01.013311.64120	
		14.0	6.0 - 8.0							01.013311.64140	
		16.0	6.0 - 10.0							01.013311.64160	
		18.0	8.0 - 12.0							01.013311.64180	
		20.0	10.0 - 14.0							01.013311.64200	
		25.0	14.0 - 18.0							01.013311.64250	
		30.0	18.0 - 23.0							01.013311.64300	
		35.0	23.0 - 28.0							01.013311.64350	
		40.0	28.0 - 33.0							01.013311.64400	

\* Tüm ölçüler mm cinsindedir. / All dimensions in mm

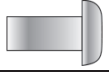
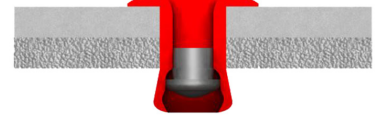
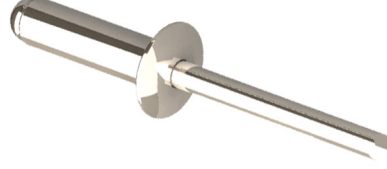
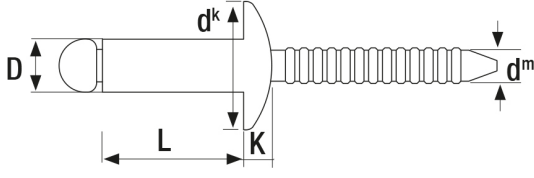
\* Ayrıca A4 (316LCu) olarak tedarik edilebilir. / Also can be supplied A4 (316LCu).

\* Tüm boy ölçülerinde [+0,1/-0,5] mm tolerans değeri olasıdır. / A tolerance value of [+0,1/-0.5] mm is possible for all length dimensions.

\* Uygulama videosu için QR kodu okutun. / \* Scan the QR code for the application video.

\* Daha fazla bilgi için lütfen bize ulaşın. satis@onurfix.com.tr / Please contact us for more information. satis@onurfix.com.tr





**Gövde / Body** : Paslanmaz Çelik / Stainless Steel A4 (316LCu) Natural



**Çivi / Nail** : Paslanmaz Çelik / Stainless Steel A4 (316LCu) Natural

Ölçülendirme / Dimensions					Kuvvet / Forces		Ürün / Product			
Çap Diameter (D) [+0,08/-0,15]	Ø		Uzunluk Length (L) [+1/-0,2]	K (Max.)		dk (Max.)	dm (Max.)	Kesme Shear (N)	Kopma Tensile (N)	01.015511
	Min.	Max.		Min.	Max.					
3.0	3.1 - 3.2	6.0	1.0 - 3.5	1.30	6.30	2.10	1800	2200	01.015511.30060	
		8.0	3.5 - 5.0						01.015511.30080	
		10.0	5.0 - 7.0						01.015511.30100	
		12.0	7.0 - 9.0						01.015511.30120	
		14.0	9.0 - 11.0						01.015511.30140	
		16.0	9.0 - 12.5						01.015511.30160	
		18.0	12.0 - 14.5						01.015511.30180	
		20.0	13.0 - 16.5						01.015511.30200	

\* Tüm ölçüler mm cinsindedir. / All dimensions in mm

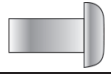
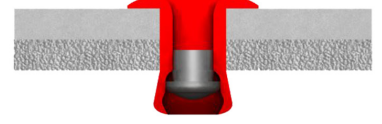
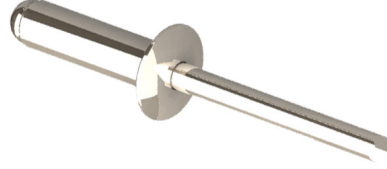
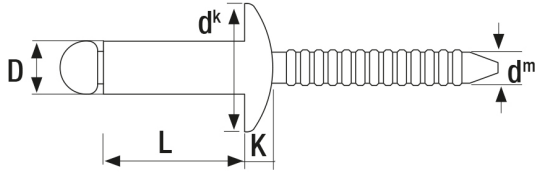
\* Ayrıca A2 (304B) olarak tedarik edilebilir. / Also can be supplied A2 (304B).

\* Tüm boy ölçülerinde [+0,1/-0,5] mm tolerans değeri olasıdır. / A tolerance value of [+0,1/-0,5] mm is possible for all length dimensions.

\* Uygulama videosu için QR kodu okutun. / \* Scan the QR code for the application video.

\* Daha fazla bilgi için lütfen bize ulaşın. satis@onurfix.com.tr / Please contact us for more information. satis@onurfix.com.tr





**Gövde / Body** : Paslanmaz Çelik / Stainless Steel A4 (316LCu) Natural



**Çivi / Nail** : Paslanmaz Çelik / Stainless Steel A4 (316LCu) Natural

Ölçülendirme / Dimensions					Kuvvet / Forces		Ürün / Product			
Çap Diameter (D) [+0,08/-0,15]	Ø		Uzunluk Length (L) [+1/-0,2]	K (Max.)		dk (Max.)	dm (Max.)	Kesme Shear (N)	Kopma Tensile (N)	01.015511
	Min.	Max.		Min.	Max.					
3.2	3.3 - 3.4	6.0	1.0 - 3.5	1.30	6.70	2.10	1900	2500	01.015511.32060	
		8.0	3.5 - 5.0						01.015511.32080	
		10.0	5.0 - 7.0						01.015511.32100	
		12.0	7.0 - 9.0						01.015511.32120	
		14.0	9.0 - 11.0						01.015511.32140	
		16.0	9.0 - 12.5						01.015511.32160	
		18.0	12.0 - 14.5						01.015511.32180	
		20.0	13.0 - 16.5						01.015511.32200	
		25.0	15.0 - 21.0						01.015511.32250	

\* Tüm ölçüler mm cinsindedir. / All dimensions in mm

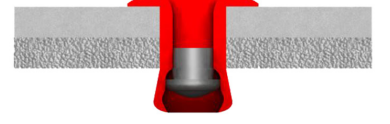
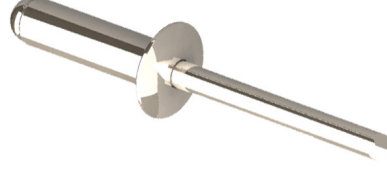
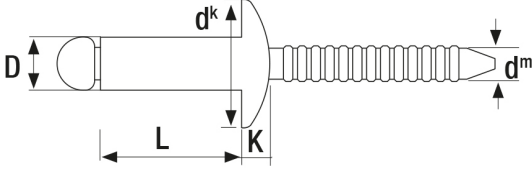
\* Ayrıca A2 (304B) olarak tedarik edilebilir. / Also can be supplied A2 (304B).

\* Tüm boy ölçülerinde [+0,1/-0,5] mm tolerans değeri olasıdır. / A tolerance value of [+0,1/-0,5] mm is possible for all length dimensions.

\* Uygulama videosu için QR kodu okutun. / \* Scan the QR code for the application video.

\* Daha fazla bilgi için lütfen bize ulaşın. satis@onurfix.com.tr / Please contact us for more information. satis@onurfix.com.tr





**Gövde / Body** : Paslanmaz Çelik / Stainless Steel A4 (316LCu) Natural



**Çivi / Nail** : Paslanmaz Çelik / Stainless Steel A4 (316LCu) Natural

Ölçülendirme / Dimensions					Kuvvet / Forces		Ürün / Product			
Çap Diameter (D) [+0,08/-0,15]	Ø		Uzunluk Length (L) [+1/-0,2]	K (Max.)		dk (Max.)	dm (Max.)	Kesme Shear (N)	Kopma Tensile (N)	01.015511
	Min.	Max.		Min.	Max.					
4.0	4.1 - 4.2	6.0	1.0 - 3.0	1.70	8.40	2.60	2700	3500	01.015511.40060	
		8.0	3.0 - 5.0						01.015511.40080	
		10.0	4.0 - 6.5						01.015511.40100	
		12.0	6.0 - 8.5						01.015511.40120	
		14.0	7.0 - 10.5						01.015511.40140	
		16.0	8.0 - 12.5						01.015511.40160	
		18.0	10.0 - 14.5						01.015511.40180	
		20.0	12.0 - 16.0						01.015511.40200	
		25.0	16.0 - 21.0						01.015511.40250	
		30.0	21.0 - 26.0						01.015511.40300	
		35.0	26.0 - 30.5						01.015511.40350	
		40.0	30.5 - 35.0						01.015511.40400	

\* Tüm ölçüler mm cinsindedir. / All dimensions in mm

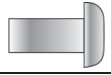
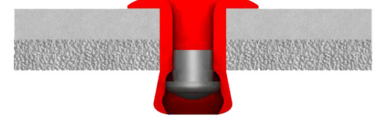
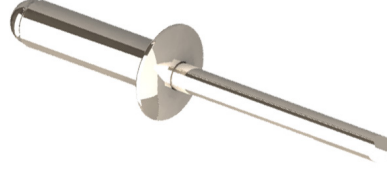
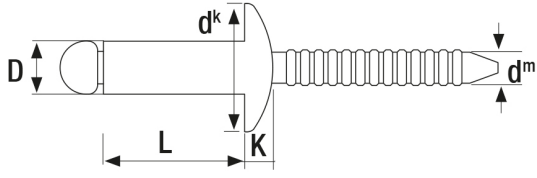
\* Ayrıca A2 (304B) olarak tedarik edilebilir. / Also can be supplied A2 (304B).

\* Tüm boy ölçülerinde [+0,1/-0,5] mm tolerans değeri olasıdır. / A tolerance value of [+0,1/-0.5] mm is possible for all length dimensions.

\* Uygulama videosu için QR kodu okutun. / \* Scan the QR code for the application video.

\* Daha fazla bilgi için lütfen bize ulaşın. satis@onurfix.com.tr / Please contact us for more information. satis@onurfix.com.tr





**Gövde / Body** : Paslanmaz Çelik / Stainless Steel A4 (316LCu) Natural



**Çivi / Nail** : Paslanmaz Çelik / Stainless Steel A4 (316LCu) Natural

Ölçülendirme / Dimensions					Kuvvet / Forces		Ürün / Product			
Çap Diameter (D) [+0,08/-0,15]	Ø		Uzunluk Length (L) [+1/-0,2]		K (Max.)	dk (Max.)	dm (Max.)	Kesme Shear (N)	Kopma Tensile (N)	01.015511
	Min.	Max.	Min.	Max.						
4.8	4.1 - 4.2		6.0	1.0 - 3.0	1.70	8.40	2.60	4000	5000	01.015511.40060
			8.0	3.0 - 5.0						01.015511.40080
			10.0	4.0 - 6.5						01.015511.40100
			12.0	6.0 - 8.5						01.015511.40120
			14.0	7.0 - 10.5						01.015511.40140
			16.0	8.0 - 12.5						01.015511.40160
			18.0	10.0 - 14.5						01.015511.40180
			20.0	12.0 - 16.0						01.015511.40200
			25.0	16.0 - 21.0						01.015511.40250
			30.0	21.0 - 26.0						01.015511.40300
			35.0	26.0 - 30.5						01.015511.40350
			40.0	30.5 - 35.0						01.015511.40400
			45.0	35.0 - 40.0						01.015511.40450
			50.0	40.0 - 45.0						01.015511.40500

\* Tüm ölçüler mm cinsindedir. / All dimensions in mm

\* Ayrıca A2 (304B) olarak tedarik edilebilir. / Also can be supplied A2 (304B).

\* Tüm boy ölçülerinde [+0,1/-0,5] mm tolerans değeri olasıdır. / A tolerance value of [+0,1/-0.5] mm is possible for all length dimensions.

\* Uygulama videosu için QR kodu okutun. / \* Scan the QR code for the application video.

\* Daha fazla bilgi için lütfen bize ulaşın. satis@onurfix.com.tr / Please contact us for more information. satis@onurfix.com.tr

