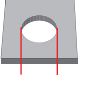
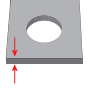
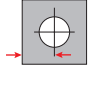



Malzeme / Material : 300 Serisi Paslanmaz Çelik / 300 Series Stainless Steel

Ölçülendirme / Dimensions									Kuvvet / Forces	Ürün / Product
Çap Diameter	Shaft Kodu Shank Code				A Max.	C Max.	E ±0.25	T ±0.25	Önerilen Somun Sıkma Torku Recommended Nut Tightening Torque (kN)	
		+0.08	Min.	Min.						
M2 x 0.4	1	4.22	1	4.8	0.97	4.2	6.35	1.5	40	04.SP000.M02001
	2		1.4		1.38				44.5	04.SP000.M02002

* Tüm ölçüler mm cinsindedir. / All dimensions are in mm

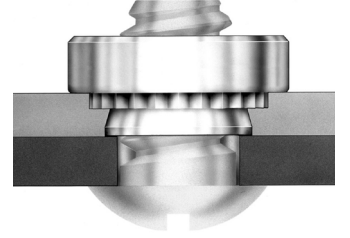
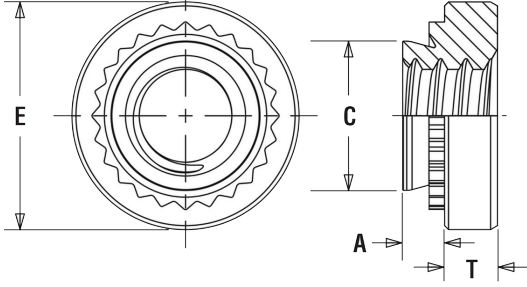
* Tüm boy ölçülerinde [+0,1/-0,5] mm tolerans değeri olasıdır. / A tolerance value of [+0,1/-0,5] mm is possible for all length dimensions

* 1,5 mm veya daha az malzeme kalınlığı için öerste bir havşa deliği gereklidir. / For material thickness of 1.5mm or less, a countersunk hole is needed in the anvil.

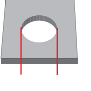
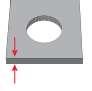
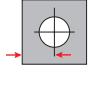

* 1,5 mm veya daha fazla malzeme kalınlığı için öerste bir geçiş deliği gereklidir. / For material thickness of 1.5mm or more, a trough-hole is needed in the anvil

* Uygulama videosu için QR kodu okutun. / Scan the QR code for the application video.





Malzeme / Material : 300 Serisi Paslanmaz Çelik / 300 Series Stainless Steel

Ölçülendirme / Dimensions									Kuvvet / Forces	Ürün / Product
Çap Diameter	Shaft Kodu Shank Code				A Max.	C Max.	E ±0.25	T ±0.25	Önerilen Somun Sıkma Torku Recommended Nut Tightening Torque (kN)	
M2.5 x 0.45	0	4.22	0.8	4.8	0.77	4.2	6.35	1.5	35.6	04.SP000.M02000
	1		1.0		0.97				40	04.SP000.M02001
	2		1.4		1.38				44.5	04.SP000.M02002

* Tüm ölçüler mm cinsindedir. / All dimensions are in mm

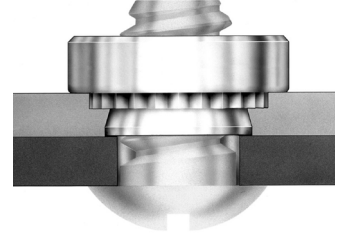
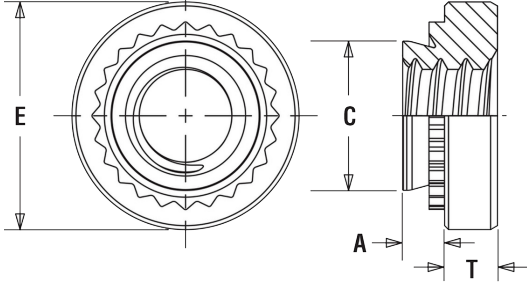
* Tüm boy ölçülerinde [+0,1/-0,5] mm tolerans değeri olasıdır. / A tolerance value of [+0,1/-0,5] mm is possible for all length dimensions

* 1,5 mm veya daha az malzeme kalınlığı için öerste bir havşa deliği gereklidir. / For material thickness of 1.5mm or less, a countersunk hole is needed in the anvil.

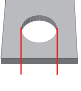
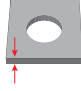
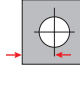

* 1,5 mm veya daha fazla malzeme kalınlığı için öerste bir geçiş deliği gereklidir. / For material thickness of 1.5mm or more, a trough-hole is needed in the anvil

* Uygulama videosu için QR kodu okutun. / Scan the QR code for the application video.





Malzeme / Material : 300 Serisi Paslanmaz Çelik / 300 Series Stainless Steel

Ölçülendirme / Dimensions									Kuvvet / Forces	Ürün / Product
Çap Diameter	Shaft Kodu Shank Code				A Max.	C Max.	E ±0.25	T ±0.25	Önerilen Somun Sıkma Torku Recommended Nut Tightening Torque (kN)	
M3 x 0.5	0	4.22	0.8	4.8	0.77	4.2	6.35	1.5	35.6	04.SP000.M03000
	1		1.0		0.97				40	04.SP000.M03001
	2		1.4		1.38				44.5	04.SP000.M03002

* Tüm ölçüler mm cinsindedir. / All dimensions are in mm

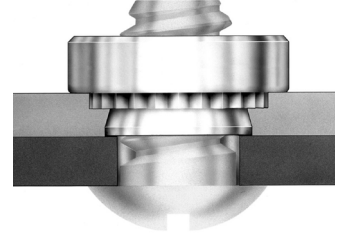
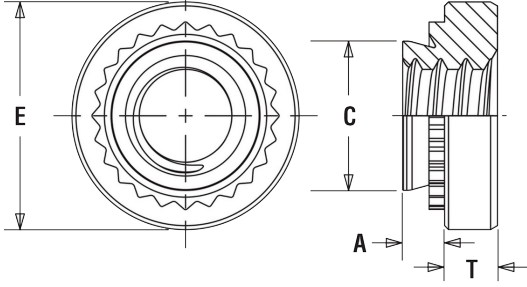
* Tüm boy ölçülerinde [+0,1/-0,5] mm tolerans değeri olasıdır. / A tolerance value of [+0,1/-0,5] mm is possible for all length dimensions

* 1,5 mm veya daha az malzeme kalınlığı için öerste bir havşa deliği gereklidir. / For material thickness of 1.5mm or less, a countersunk hole is needed in the anvil.

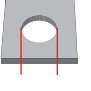
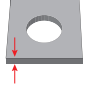

* 1,5 mm veya daha fazla malzeme kalınlığı için öerste bir geçiş deliği gereklidir. / For material thickness of 1.5mm or more, a trough-hole is needed in the anvil

* Uygulama videosu için QR kodu okutun. / Scan the QR code for the application video.





Malzeme / Material : 300 Serisi Paslanmaz Çelik / 300 Series Stainless Steel

Ölçülendirme / Dimensions									Kuvvet / Forces	Ürün / Product
Çap Diameter	Shaft Kodu Shank Code				A Max.	C Max.	E ±0.25	T ±0.25	Önerilen Somun Sıkma Torku Recommended Nut Tightening Torque (kN)	
M4 x 0.7	0	5.41	0.8	6.9	0.77	5.38	7.87	2	40	04.SP000.M04000
	1		1.0		0.97				44.5	04.SP000.M04001
	2		1.4		1.38				49	04.SP000.M04002

* Tüm ölçüler mm cinsindedir. / All dimensions are in mm

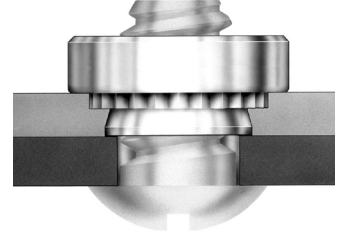
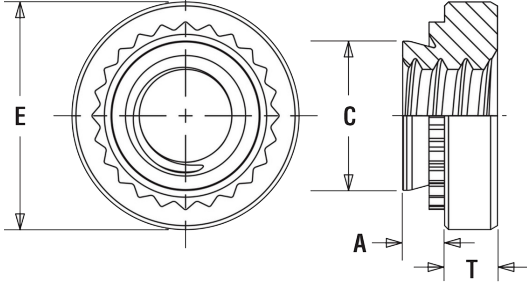
* Tüm boy ölçülerinde [+0,1/-0,5] mm tolerans değeri olasıdır. / A tolerance value of [+0,1/-0,5] mm is possible for all length dimensions

* 1,5 mm veya daha az malzeme kalınlığı için öerste bir havşa deliği gereklidir. / For material thickness of 1.5mm or less, a countersunk hole is needed in the anvil.

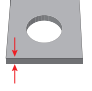
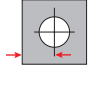

* 1,5 mm veya daha fazla malzeme kalınlığı için öerste bir geçiş deliği gereklidir. / For material thickness of 1.5mm or more, a trough-hole is needed in the anvil

* Uygulama videosu için QR kodu okutun. / Scan the QR code for the application video.





Malzeme / Material : 300 Serisi Paslanmaz Çelik / 300 Series Stainless Steel

Ölçülendirme / Dimensions									Kuvvet / Forces	Ürün / Product
Çap Diameter	Shaft Kodu Shank Code				A Max.	C Max.	E ±0.25	T ±0.25	Önerilen Somun Sıkma Torku Recommended Nut Tightening Torque (kN)	
M5 x 0.8	0	6.35	0.8	7.1	0.77	6.33	8.64	2	42.3	04.SP000.M05000
	1		1.0		0.97				46.7	04.SP000.M05001
	2		1.4		1.38				51.2	04.SP000.M05002

* Tüm ölçüler mm cinsindedir. / All dimensions are in mm

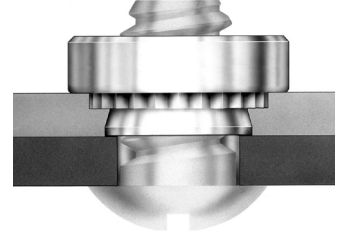
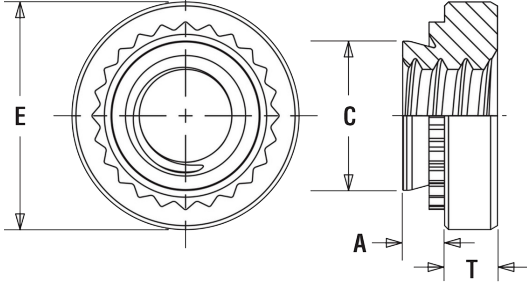
* Tüm boy ölçülerinde [+0,1/-0,5] mm tolerans değeri olasıdır. / A tolerance value of [+0,1/-0,5] mm is possible for all length dimensions

* 1,5 mm veya daha az malzeme kalınlığı için öerste bir havşa deliği gereklidir. / For material thickness of 1.5mm or less, a countersunk hole is needed in the anvil.

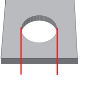
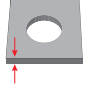
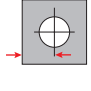

* 1,5 mm veya daha fazla malzeme kalınlığı için öerste bir geçiş deliği gereklidir. / For material thickness of 1.5mm or more, a trough-hole is needed in the anvil

* Uygulama videosu için QR kodu okutun. / Scan the QR code for the application video.





Malzeme / Material : 300 Serisi Paslanmaz Çelik / 300 Series Stainless Steel

Ölçülendirme / Dimensions									Kuvvet / Forces	Ürün / Product
Çap Diameter	Shaft Kodu Shank Code				A Max.	C Max.	E ±0.25	T ±0.25	Önerilen Somun Sıkma Torku Recommended Nut Tightening Torque (kN)	
M6 x 1.0	1	8.75	1.4	8.6	1.38	8.73	11.18	4.08	60	04.SP000.M06000
	2		2.29		2.21				60	04.SP000.M06001

* Tüm ölçüler mm cinsindedir. / All dimensions are in mm

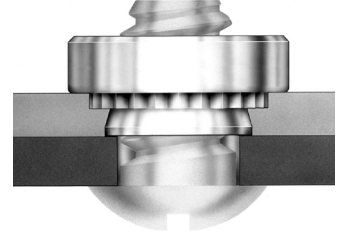
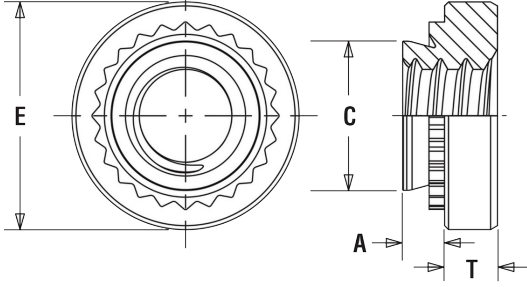
* Tüm boy ölçülerinde [+0,1/-0,5] mm tolerans değeri olasıdır. / A tolerance value of [+0,1/-0,5] mm is possible for all length dimensions

* 1,5 mm veya daha az malzeme kalınlığı için öerste bir havşa deliği gereklidir. / For material thickness of 1.5mm or less, a countersunk hole is needed in the anvil.

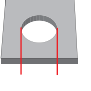
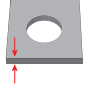
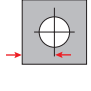

* 1,5 mm veya daha fazla malzeme kalınlığı için öerste bir geçiş deliği gereklidir. / For material thickness of 1.5mm or more, a trough-hole is needed in the anvil

* Uygulama videosu için QR kodu okutun. / Scan the QR code for the application video.





Malzeme / Material : 300 Serisi Paslanmaz Çelik / 300 Series Stainless Steel

Ölçülendirme / Dimensions									Kuvvet / Forces	Ürün / Product
Çap Diameter	Shaft Kodu Shank Code				A Max.	C Max.	E ±0.25	T ±0.25	Önerilen Somun Sıkma Torku Recommended Nut Tightening Torque (kN)	
M8 x 1.25	1	10.5	1.4	9.7	1.38	10.47	12.7	5.47	66	04.SP000.M08000
	2		2.29		2.21				80	04.SP000.M08001

* Tüm ölçüler mm cinsindedir. / All dimensions are in mm

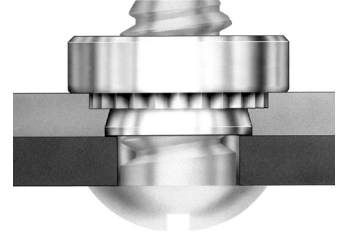
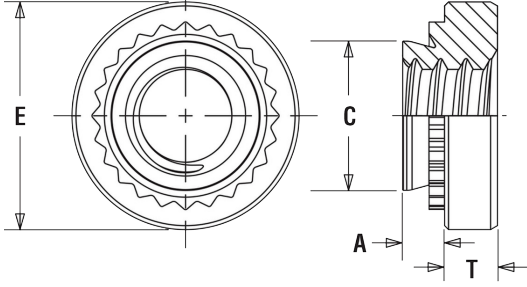
* Tüm boy ölçülerinde [+0,1/-0,5] mm tolerans değeri olasıdır. / A tolerance value of [+0,1/-0,5] mm is possible for all length dimensions

* 1,5 mm veya daha az malzeme kalınlığı için öerste bir havşa deliği gereklidir. / For material thickness of 1.5mm or less, a countersunk hole is needed in the anvil.

* 1,5 mm veya daha fazla malzeme kalınlığı için öerste bir geçiş deliği gereklidir. / For material thickness of 1.5mm or more, a trough-hole is needed in the anvil

* Uygulama videosu için QR kodu okutun. / Scan the QR code for the application video.





Malzeme / Material : 300 Serisi Paslanmaz Çelik / 300 Series Stainless Steel

Ölçülendirme / Dimensions									Kuvvet / Forces	Ürün / Product
Çap Diameter	Shaft Kodu Shank Code	 +0.08	 Min.	 Min.	A Max.	C Max.	E ±0.25	T ±0.25	Önerilen Somun Sıkma Torku Recommended Nut Tightening Torque (kN)	 04.SP000
M10 x 1.5	1	14	2.29	13.5	2.21	13.97	17.35	7.48	80	04.SP000.M01001

* Tüm ölçüler mm cinsindedir. / All dimensions are in mm

* Tüm boy ölçülerinde [+0,1/-0,5] mm tolerans değeri olasıdır. / A tolerance value of [+0,1/-0,5] mm is possible for all length dimensions

* 1,5 mm veya daha az malzeme kalınlığı için öerste bir havşa deliği gereklidir. / For material thickness of 1.5mm or less, a countersunk hole is needed in the anvil.

* 1,5 mm veya daha fazla malzeme kalınlığı için öerste bir geçiş deliği gereklidir. / For material thickness of 1.5mm or more, a trough-hole is needed in the anvil

* Uygulama videosu için QR kodu okutun. / Scan the QR code for the application video.

