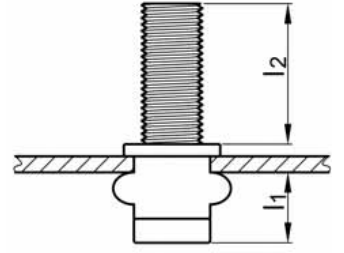
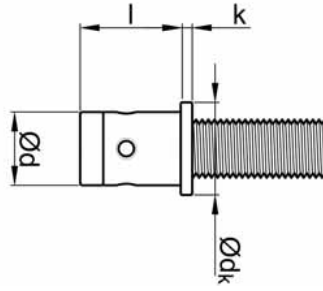

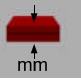


SAPLAMA PERÇİN ÇELİK FLANŞ KAFA

RIVETSTUD STEEL FLANGE HEAD



*		l [+1/-2] [mm]		Ø dk [mm]	k [mm]	d [+0/0,12] [mm]	l ₁ [mm]	l ₂ [mm]	ÜRÜN NO PART NO
M4	Ø 5,5	8,0	0,5 - 2,0	8,0	0,5	5,4	3,5	10	02.31223.M048000520
		8,0	2,0 - 3,0				4,0	10	02.31223.M048002030
M5	Ø 6,6	9,0	0,5 - 2,0	9,0	0,8	6,5	4,5	10	02.31223.M059000520
		10,5	2,0 - 3,5				4,5	10	02.31223.M051052035
M6	Ø 7,8	10,0	0,5 - 2,5	10,0	1,0	7,7	5,0	10	02.31223.M061000525
		11,5	2,5 - 4,0				5,0	10	02.31223.M061152540
M8	Ø 9,9	12,5	1,0 - 3,0	12,0	1,5	9,8	7,0	15	02.31223.M081251030
		15,0	3,0 - 5,0				7,0	15	02.31223.M081503050

