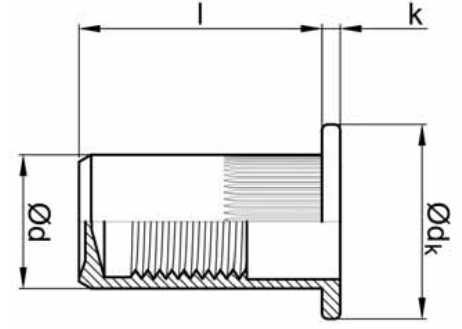
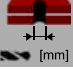
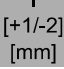
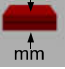
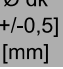
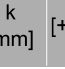
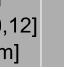
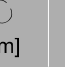


SOMUNLU PERÇİN SIZDIRMAZ ÇELİK GÖVDE FLANŞ KAFA

RIVET NUTS CLOSED END ST FLANGE HEAD KNURLED BODY



									ÜRÜN NO PART NO
	[mm]		[+1/-2] [mm]	mm	Ø dk [+/-0,5] [mm]	k [mm]	d [+0/0,12] [mm]	[Nm]	
M4	Ø 6,0	$\begin{matrix} \updownarrow [N] : 7.860 \\ \rightleftarrows [N] : 2.210 \end{matrix}$	16,0	0,5 - 2,0	9,0 [+/-0,5]	≤ 0,8	5,9	6,0	02.21213.M041600520
			18,0	2,0 - 4,0					02.21213.M041802040+
M5	Ø 7,0	$\begin{matrix} \updownarrow [N] : 10.780 \\ \rightleftarrows [N] : 2.320 \end{matrix}$	17,0	0,5 - 3,0	10,0 [+/-0,5]	≤ 1,0	6,9	6,9	02.21213.M051700530
			19,0	2,0 - 5,0					02.21213.M051902050
M6	Ø 9,0	$\begin{matrix} \updownarrow [N] : 16.660 \\ \rightleftarrows [N] : 3.660 \end{matrix}$	19,2	0,5 - 3,0	12,3 [+/-0,5]	≤ 1,3	8,9	8,9	02.21213.M061920530
			21,0	3,0 - 5,0					02.21213.M062103050
M8	Ø 11,0	$\begin{matrix} \updownarrow [N] : 30.840 \\ \rightleftarrows [N] : 4.720 \end{matrix}$	21,5	0,5 - 3,0	15,0 [+/-0,5]	≤ 1,5	10,9	10,9	02.21213.M082150530
			24,0	3,0 - 5,5					02.21213.M082403055
M10	Ø 13,0	$\begin{matrix} \updownarrow [N] : 34.300 \\ \rightleftarrows [N] : 5.050 \end{matrix}$	27,0	1,0 - 4,0	17,0 [+/-0,5]	≤ 1,6	12,9	12,9	02.21213.M102701040

