

FASTENING & ASSEMBLY SOLUTIONS FOR ELECTRICAL INDUSTRY

Increase your design possibilities & boost your manufacturing productivity!

Cable Ties



Plastic Cable Clips



Plastic Panel Pins



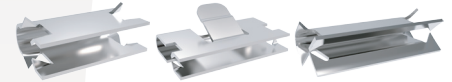
Grounding Clips



Grommets and Caps



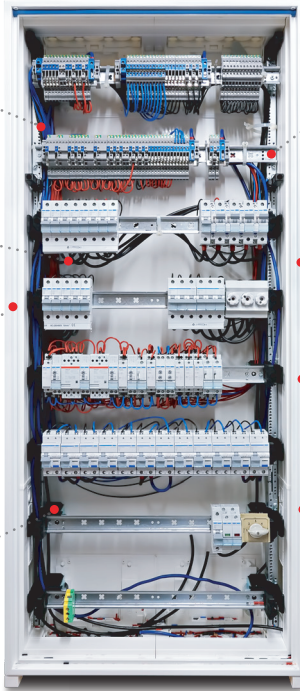
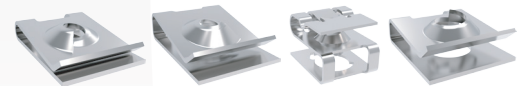
Metal Panel Clips



Shaft Retainers



Metal Snap on Nuts



A Raymond **Industrial** currently provides to the electrical market different product lines such as:

CABLE TIES

Ensuring the fastening of electrical cables, pipes or corrugated hoses to the structure or to a metal panel, the available cable ties have extra features such as edge clips, fir tree or anchor foot function, plastic clips to attach it to a pipe and or swivel function.

PLASTIC CABLE CLIPS

These parts are simple to install and provide a reliable retention. The product family is wide and can be assembled in different environments like in a hole, on a panel edge, on a stud, to cables/tubes/hoses and on flat surfaces.

METAL SNAP ON NUTS

Most of the HVAC appliances are made from thin metal sheet panels, acting as covers and fixed to an internal metal frame. This family eliminates the need for re-work and the potential replacement of an entire panel due to sheet metal screw stripping. It also avoids doing weak threads in this kind of thin panels. A wide product family is available, dimensions, different thickness range, materials and type or screw, either metric or self tapping screws.

GROMMETS AND CAPS

Families whose main function is the protection and finishing of the end products. Grommets protect the wiring passing through a metal sheet hole, avoiding the damage and even cutting the cable. Caps protect from dust and embellish an unused hole of the product.

PLASTIC PANEL PINS

Plastic push pins for replacement of traditional solutions such as screws or rivets. Depending the design fits in a panel hole or in a blind hole. Aesthetic solution thanks to small head to be unnoticeable and some solutions with removable function. Some application where they are used is fixing the plastic or metal covers of the front panel of an Industrial fan, or heating equipment.

METAL PANEL CLIPS

The main function is to attach two panels between them. This attachment can be done with the two panels from one direction (U-Clips) or with the two panels from opposite directions (S-Clips). Depending the direction of the spikes can be used in different specific applications.

GROUNDING CLIPS

Technical solutions with high added value, allow the connection of metallic elements to the ground without need of holes, welded studs, toothed and threaded washers.

SHAFT RETAINERS

Easily applied, they provide several advantages over the traditional hex-shaped cold-headed nuts, by eliminating need for a washer and lock-washer and reducing material and investment costs. Shaft Retainers require less torque, and the self-threading option eliminates the need for a threaded rod or screw and can be assembled directly to injection molded parts.

www.onurfix.com.tr

ONURFIX®