



**Touchpoint Solutions**  
for Self Service Equipment

# Your Challenge

## Southco's Infinite Possibilities

### Secure convenient access at your command

Southco's expansive offering of electronic and mechanical locking and latching solutions restrict and monitor unauthorized access.

- Robust quarter turns, compression and push-to-close mechanical latches provide simple security
- Intelligent electromechanical locks enable higher mechanical loads with minimal electrical power
- Keypads, electronic keys and RF-based proximity cards eliminate physical keys
- Concealed electronic latches eliminate pry points and increase vandal resistance

### Precise positioning solutions at your fingertips

Southco's engineering expertise in positioning technology enhances functionality, precision and user experience of self service equipment - from basic friction hinges to highly sophisticated screen positioning devices.

- Constant torque hinges securely position touch screens, access panels and resist finger pressure
- Tilt and swivel mechanisms enable easy screen adjustment and shared screen viewing

#### ELECTRONIC ACCESS



#### MECHANICAL LOCKING



#### HINGES





# Why use Southco's Self Service Solutions

Southco eliminates design headaches with more than 60 years of experience in access hardware solutions for industries such as electronics, automotive and aerospace. Seasoned engineers deliver the precise solution for your self service equipment needs - standard or custom. Whether your priority is security, durability, ergonomics or appearance, Southco has a solution to match your requirements.

## Do you need to:

- Protect sensitive data
- Track equipment access
- Prevent skimming and shrinkage

**Southco Security Solutions** provide improved kiosk security from simple mechanical engineering to sophisticated electronic access with remote monitoring and audit trail capabilities.

## Do you want to:

- Enhance equipment appearance
- Position screens optimally
- Enable quick access and service

**Southco Display Positioning and Hinge Solutions** enable unique industrial design options with enhanced ergonomics. Southco delivers smooth, secure positioning of monitors, screens and access panels to improve the experience of both end user and service personnel.



# ATMs & Vending Machines

ATM's and Vending Machines require restricted access, from the sophisticated ATM needs like remote monitoring of service personnel and easily accessed audit trail as well as convenient maintenance of machines.

**Southco's proven solutions meet the high-security needs of ATMs while enhancing ATM and Vending operations so the industry can serve its customers conveniently, securely and efficiently.**

- Robust electronic latches restrict access and offer full audit trail
- Concealed locks and latches eliminate pry points for vandals and thieves
- Position control hinges enable optimal screen positioning for quick servicing
- Durable hinges secure heavy doors during restocking
- Versatile mechanical and electronic latches serve both indoor and outdoor applications

**Southco provides multiple solutions for:**

ATM · High Ticket Retail Items · Gaming Machines · Food and Beverage Outlets





# Point of Sale & Outdoor Kiosks

Point of sale kiosks help customers complete the shopping process quickly and easily in areas such as checkout, ticketing and food ordering. These kiosks require durability for a long lifecycle and secure screen positioning for optimal use. Outdoor kiosks are integral to our fast-paced lives. From fueling stations, parking meters, EV charging stations and tolls, we have come to depend on the efficiency of these machines.

**Southco's proven solutions deliver enhanced durability to kiosks and minimize the need for replacements and servicing. Southco's components withstand harsh environmental elements and vandals.**

- Robust constant torque hinges withstand customer abuse
- Sturdy monitor arms enable unlimited screen positioning
- Robust locks resist vandals and tampering
- Compression latches deliver enhanced security at pry points
- Stainless steel latches and hinges ensure durability and corrosion resistance

**Southco provides multiple solutions for:**

Self-serve Checkouts · Ticketing Outlets · Food Ordering Kiosks · Fueling Stations · Parking · EV Charging Stations · Tolls



# Latching Solutions

## MECHANICAL SOLUTIONS

### ACCESS ENTRY DOORS

### PANELS & STORAGE

E3



62



H3



CR



CM



A3



G5



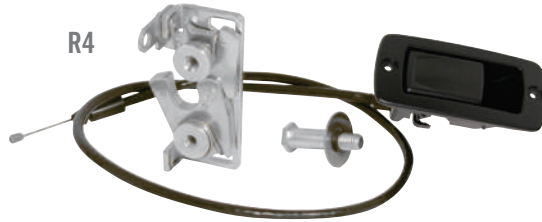
E5



G2



R4



93



## ELECTROMECHANICAL SOLUTIONS

### ACCESS CONTROL

### ACCESS ENTRY DOORS

### PANELS & STORAGE

EA-P1 & P3



EA-KC2



EA-R02



EA-A06



H3-EM



H3-EM with Proxy



R4-EM



EM-05



EM-10



# Hinge & Positioning Solutions

## POSITIONING TECHNOLOGY SOLUTIONS

### MONITOR & PANEL POSITIONING

AV



E6



G7



ST



## HINGE SOLUTIONS

### PANEL OPENING

C6



R6



G6



E6



### DOOR MOUNTING

96



EH



F6



# About Southco

Southco, Inc. is the leading global designer and manufacturer of engineered access solutions. From quality and performance to aesthetics and ergonomics, we understand that first impressions are lasting impressions in product design. For over 70 years, Southco has helped the world's most recognized brands create value for their customers with innovative access solutions designed to enhance the touch points of their products in transportation and industrial applications, medical equipment, data centers and more.



**ELECTRONIC  
ACCESS**



**DISPLAY  
MOUNTS**



**COMPRESSION  
LATCHES**



**CAM LATCHES,  
LOCKS & SWING-  
HANDLES**



**PUSH-TO-CLOSE  
LATCHES**



**ROTARY  
LATCHES**



**DRAW  
LATCHES**



**HINGES**



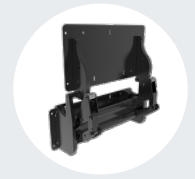
**QUICK ACCESS  
FASTENERS**



**CAPTIVE  
SCREWS**



**INJECT / EJECT**



**LIFT-A-SYST®**

**southco**®

**Americas Global Headquarters**

Concordville, PA, USA  
Tel: (1) 610 459 4000

**Europe Headquarters**

Worcester, UK  
Tel: (44) (0) 1905 346722

**Asia Pacific Headquarters**

Hong Kong, China  
Tel: (852) 3127 1503

**WORLDWIDE MANUFACTURING AND STOCKING LOCATIONS**

Concordville, Pennsylvania, USA · Honeoye Falls, New York, USA · Philadelphia, PA, USA · Warminster, PA, USA · Chihuahua, Mexico · Tecate, Mexico · São Paulo, Brazil  
Rzeszów, Poland · Farnham, UK · Worcester, UK · Hong Kong, China · Shenzhen, China · Shanghai, China · Seoul, Korea · Melbourne, Australia · Pune, India · Osaka, Japan