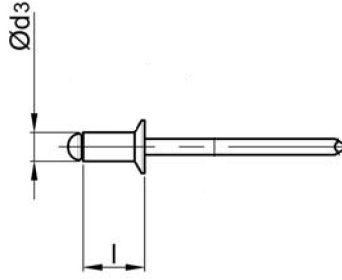
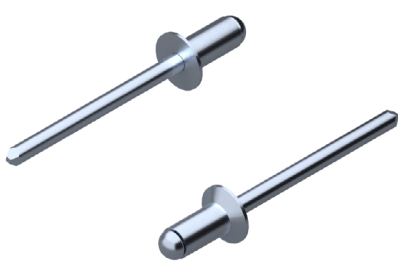
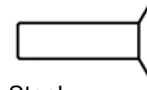


# STANDART PERÇİN ST/ST HAVŞA KAFA

## OPEN TYPE ST/ST COUNTERSUNK HEAD

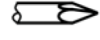


Çelik  
Çinko Kaplama



Steel  
Zink Plated

Çelik  
Çinko Kaplama



Steel  
Zink Plated

| Ø d3                             |  |   | l [+1/-1]<br>[mm] |  | ÜRÜN NO<br>PART NO |  |  |
|----------------------------------|---|---|-------------------|---|--------------------|--|--|
| *<br><b>3,0</b><br>[+0,08/-0,15] | Ø 3,1   | $\updownarrow$ [N] : 1.125<br>$\leftrightarrow$ [N] : 915   | 6,0               | 1,5 - 3,0   | 01.012221.30060    |  |  |
|                                  |   |   | 8,0               | 3,0 - 5,0   | 01.012221.30080    |  |  |
|                                  |   |   | 10,0              | 5,0 - 6,5   | 01.012221.30100    |  |  |
|                                  |   |   | 12,0              | 6,5 - 8,0   | 01.012221.30120    |  |  |
| *<br><b>3,2</b><br>[+0,08/-0,15] | Ø 3,3   | $\updownarrow$ [N] : 1.285<br>$\leftrightarrow$ [N] : 1.060 | 6,0               | 1,5 - 3,0   | 01.012221.32060    |  |  |
|                                  |   |   | 8,0               | 3,0 - 5,0   | 01.012221.32080    |  |  |
|                                  |   |   | 10,0              | 5,0 - 6,5   | 01.012221.32100    |  |  |
|                                  |   |   | 12,0              | 6,5 - 8,0   | 01.012221.32120    |  |  |
| *<br><b>4,0</b><br>[+0,08/-0,15] | Ø 4,1   | $\updownarrow$ [N] : 1.990<br>$\leftrightarrow$ [N] : 1.550 | 6,0               | 2,0 - 3,0   | 01.012221.40060    |  |  |
|                                  |   |   | 8,0               | 3,0 - 5,0   | 01.012221.40080    |  |  |
|                                  |   |   | 10,0              | 5,0 - 6,5   | 01.012221.40100    |  |  |
|                                  |   |   | 12,0              | 6,5 - 8,0   | 01.012221.40120    |  |  |
|                                  |   |   | 14,0              | 8,0 - 10,0  | 01.012221.40140    |  |  |
| *<br><b>4,8</b><br>[+0,08/-0,15] | Ø 4,9   | $\updownarrow$ [N] : 2.920<br>$\leftrightarrow$ [N] : 2.300 | 16,0              | 8,0 - 12,0  | 01.012221.40160    |  |  |
|                                  |   |   | 8,0               | 2,5 - 4,0   | 01.012221.48080    |  |  |
|                                  |   |   | 10,0              | 4,0 - 6,0   | 01.012221.48100    |  |  |
|                                  |   |   | 12,0              | 6,0 - 8,0   | 01.012221.48120    |  |  |
|                                  |   |   | 14,0              | 6,0 - 9,0   | 01.012221.48140    |  |  |
|                                  |   |   | 16,0              | 8,0 - 11,0  | 01.012221.48160    |  |  |
| 18,0                             | 11,0 - 13,0   | 01.012221.48180   |                   |   |                    |  |  |
| 20,0                             | 11,0 - 15,0   | 01.012221.48200   |                   |   |                    |  |  |

