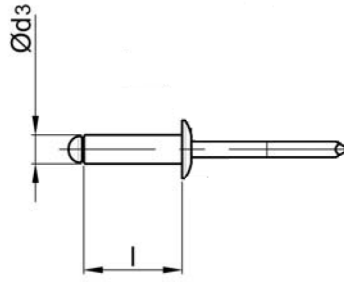
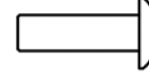


STANDART PERÇİN ST/ST BOMBE KAFI

OPEN TYPE ST/ST DOME HEAD



Çelik
Çinko Kaplama


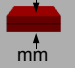


Steel
Zink Plated

Çelik
Çinko Kaplama



Steel
Zink Plated

| Ø d3 |  [mm] | | l [+1/-2] [mm] |  mm | ÜRÜN NO PART NO | | |
|----------------------|--|---|----------------|--|--------------------|--|--|
| 3,0 [+0.08/-0.15] | Ø 3,1 | \updownarrow [N] : 1.125 \leftrightarrow [N] : 915 | 6,0 | 0,5 - 3,0 | 01.012211.30060 | | |
| | | | 8,0 | 3,0 - 5,0 | 01.012211.30080 | | |
| | | | 10,0 | 5,0 - 6,5 | 01.012211.30100 | | |
| | | | 12,0 | 6,5 - 8,0 | 01.012211.30120 | | |
| | | | 14,0 | 9,0 - 11,0 | 01.012211.30140 | | |
| 3,2 [+0.08/-0.15] | Ø 3,3 | \updownarrow [N] : 1.285 \leftrightarrow [N] : 1.060 | 6,0 | 0,5 - 3,0 | 01.012211.32060 | | |
| | | | 8,0 | 3,0 - 5,0 | 01.012211.32080 | | |
| | | | 10,0 | 5,0 - 6,5 | 01.012211.32100 | | |
| | | | 12,0 | 6,5 - 8,0 | 01.012211.32120 | | |
| | | | 14,0 | 7,5 - 10,5 | 01.012211.32140* | | |
| | | | 16,0 | 8,0 - 12,0 | 01.012211.32160* | | |
| 4,0 [+0.08/-0.15] | Ø 4,1 | \updownarrow [N] : 1.990 \leftrightarrow [N] : 1.550 | 6,0 | 1,0 - 3,0 | 01.012211.40060 | | |
| | | | 8,0 | 3,0 - 5,0 | 01.012211.40080 | | |
| | | | 10,0 | 5,0 - 6,5 | 01.012211.40100 | | |
| | | | 12,0 | 6,5 - 9,5 | 01.012211.40120 | | |
| | | | 14,0 | 8,5 - 10,0 | 01.012211.40140 | | |
| | | | 16,0 | 9,0 - 12,0 | 01.012211.40160 | | |
| | | | 18,0 | 12,0 - 14,0 | 01.012211.40180 | | |
| | | | 20,0 | 12,0 - 16,0 | 01.012211.40200 | | |
| 4,8 [+0.08/-0.15] | Ø 4,9 | \updownarrow [N] : 2.920 \leftrightarrow [N] : 2.300 | 6,0 | 1,0 - 2,5 | 01.012211.48060 | | |
| | | | 8,0 | 2,5 - 4,0 | 01.012211.48080 | | |
| | | | 10,0 | 4,0 - 6,0 | 01.012211.48100 | | |
| | | | 12,0 | 6,0 - 8,0 | 01.012211.48120 | | |
| | | | 14,0 | 7,5 - 9,5 | 01.012211.48140 | | |
| | | | 16,0 | 8,0 - 11,0 | 01.012211.48160 | | |
| | | | 18,0 | 10,0 - 13,0 | 01.012211.48180 | | |
| | | | 20,0 | 11,0 - 15,0 | 01.012211.48200 | | |
| | | | 22,0 | 13,0 - 16,5 | 01.012211.48220 | | |
| | | | 25,0 | 15,0 - 19,5 | 01.012211.48250 | | |
| | | | 28,0 | 20,0 - 23,0 | 01.012211.48280* | | |
| | | | 30,0 | 23,0 - 26,0 | 01.012211.48300* | | |
| 6,0 [+0.08/-0.15] | Ø 6,1 | \updownarrow [N] : 5.020 \leftrightarrow [N] : 4.040 | 12,0 | 4,0 - 6,0 | 01.012211.60120 | | |
| | | | 15,0 | 6,0 - 9,0 | 01.012211.60150 | | |
| | | | 18,0 | 10,0 - 12,0 | 01.012211.60180 | | |
| | | | 20,0 | 10,0 - 14,0 | 01.012211.60200 | | |
| | | | 25,0 | 14,0 - 19,0 | 01.012211.60260 | | |
| | | | 30,0 | 19,0 - 24,0 | 01.012211.60300 | | |

