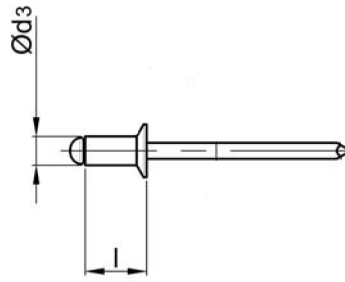
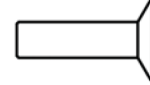


STANDART PERÇİN SS/SS HAVŞA KAFA

OPEN TYPE SS/SS COUNTERSUNK HEAD



Paslanmaz Çelik
Parlatılmış


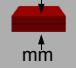


Stainless Steel
Polished

Paslanmaz Çelik
Parlatılmış



Stainless Steel
Polished

Ø d3			l [+1/-2] [mm]		ÜRÜN NO PART NO		
3,2 [+0.08/-0.15]	Ø 3,3	$\begin{matrix} \updownarrow \\ \rightleftharpoons \end{matrix}$ [N] : 2.500 \rightleftharpoons [N] : 1.800	6,0	1,5 - 3,0	01.013321.32060		
			8,0	3,0 - 5,0	01.013321.32080		
			10,0	5,0 - 6,5	01.013321.32100		
			12,0	6,5 - 8,5	01.013321.32120		
4,0 [+0.08/-0.15]	Ø 4,1	$\begin{matrix} \updownarrow \\ \rightleftharpoons \end{matrix}$ [N] : 3.800 \rightleftharpoons [N] : 3.100	6,0	1,5 - 2,5	01.013321.40060		
			8,0	2,5 - 4,5	01.013321.40080		
			10,0	4,5 - 6,5	01.013321.40100		
			12,0	6,5 - 8,5	01.013321.40120		
4,8 [+0.08/-0.15]	Ø 4,9	$\begin{matrix} \updownarrow \\ \rightleftharpoons \end{matrix}$ [N] : 6.000 \rightleftharpoons [N] : 4.500	14,0	8,5 - 12,0	01.013321.40140		
			8,0	2,5 - 4,0	01.013321.48080		
			10,0	4,0 - 6,0	01.013321.48100		
			12,0	6,0 - 8,0	01.013321.48120		
			14,0	6,0 - 9,0	01.013321.48140		
			16,0	8,0 - 11,0	01.013321.48160		
18,0	11,0 - 13,0	01.013321.48180					
20,0	13,0 - 15,0	01.013321.48200					

